

Datasheet for ABIN631358
anti-WWP2 antibody (C-Term)



[Go to Product page](#)

1 Image

Overview

Quantity:	100 µL
Target:	WWP2
Binding Specificity:	C-Term
Reactivity:	Human
Host:	Rabbit
Clonality:	Polyclonal
Conjugate:	This WWP2 antibody is un-conjugated
Application:	Western Blotting (WB)

Product Details

Immunogen:	WWP2 antibody was raised using the C terminal of WWP2 corresponding to a region with amino acids IDKVGKETWLP RSHTCFNRLDLPPYKSYEQLREKLLYAIEETEGFGQE
Specificity:	WWP2 antibody was raised against the C terminal of WWP2
Purification:	Affinity purified

Target Details

Target:	WWP2
Alternative Name:	WWP2 (WWP2 Products)
Background:	WWP2 is a member of the NEDD4-like protein family. The family of proteins is known to possess ubiquitin-protein ligase activity. WWP2 contains 4 tandem WW domains. The WW domain is a protein motif consisting of 35 to 40 amino acids and is characterized by 4

Target Details

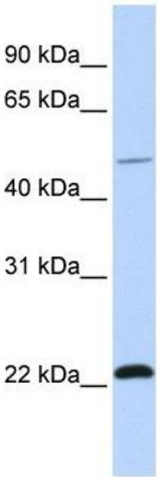
	conserved aromatic residues. The WW domain may mediate specific protein-protein interactions.
Molecular Weight:	51 kDa (MW of target protein)
Pathways:	Negative Regulation of Transporter Activity

Application Details

Application Notes:	WB: 1 µg/mL Optimal conditions should be determined by the investigator.
Comment:	WWP2 Blocking Peptide, catalog no. 33R-3918, is also available for use as a blocking control in assays to test for specificity of this WWP2 antibody
Restrictions:	For Research Use only

Handling

Format:	Lyophilized
Reconstitution:	Lyophilized powder. Add distilled water for a 1 mg/mL concentration of WWP2 antibody in PBS
Concentration:	Lot specific
Buffer:	PBS
Handling Advice:	Avoid repeated freeze/thaw cycles. Dilute only prior to immediate use.
Storage:	4 °C/-20 °C
Storage Comment:	Store at 2-8 °C for short periods. For longer periods of storage, store at -20 °C.



Western Blotting

Image 1. WWP2 antibody used at 1 ug/ml to detect target protein.