

Datasheet for ABIN631371  
**anti-UBE2S antibody (N-Term)**



[Go to Product page](#)

1 Image

## Overview

Quantity:	100 µL
Target:	UBE2S
Binding Specificity:	N-Term
Reactivity:	Human, Rat, Mouse
Host:	Rabbit
Clonality:	Polyclonal
Conjugate:	This UBE2S antibody is un-conjugated
Application:	Western Blotting (WB)

## Product Details

Immunogen:	UBE2 S antibody was raised using the N terminal of UBE2 corresponding to a region with amino acids NSNVENLPPHIIRLVYKEVTTLTADPPDGIKVFPNEEDLTLQVTIEGPE
Specificity:	UBE2 S antibody was raised against the N terminal of UBE2
Purification:	Affinity purified

## Target Details

Target:	UBE2S
Alternative Name:	UBE2S ( <a href="#">UBE2S Products</a> )
Background:	UBE2S is a member of the ubiquitin-conjugating enzyme family. It is able to form a thiol ester linkage with ubiquitin in a ubiquitin activating enzyme-dependent manner, a characteristic property of ubiquitin carrier proteins.

## Target Details

Molecular Weight: 24 kDa (MW of target protein)

Pathways: [Ubiquitin Proteasome Pathway](#)

## Application Details

Application Notes: WB: 1 µg/mL  
Optimal conditions should be determined by the investigator.

Comment: UBE2S Blocking Peptide, catalog no. 33R-6884, is also available for use as a blocking control in assays to test for specificity of this UBE2S antibody

Restrictions: For Research Use only

## Handling

Format: Lyophilized

Reconstitution: Lyophilized powder. Add distilled water for a 1 mg/mL concentration of UBE0 antibody in PBS

Concentration: Lot specific

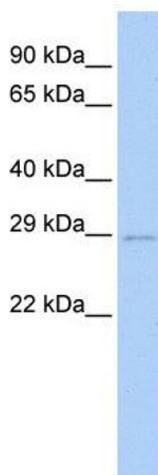
Buffer: PBS

Handling Advice: Avoid repeated freeze/thaw cycles.  
Dilute only prior to immediate use.

Storage: 4 °C/-20 °C

Storage Comment: Store at 2-8 °C for short periods. For longer periods of storage, store at -20 °C.

## Images



### Western Blotting

**Image 1.** UBE2S antibody used at 1 µg/ml to detect target protein.