

Datasheet for ABIN631379
anti-RNF25 antibody (Middle Region)



[Go to Product page](#)

3 Images

Overview

Quantity:	100 µL
Target:	RNF25
Binding Specificity:	Middle Region
Reactivity:	Human, Dog
Host:	Rabbit
Clonality:	Polyclonal
Conjugate:	This RNF25 antibody is un-conjugated
Application:	Western Blotting (WB), Immunohistochemistry (IHC)

Product Details

Immunogen:	RNF25 antibody was raised using the middle region of RNF25 corresponding to a region with amino acids CREPLVYDLASLKAPEPQQPMELYQPSAESLRQQEERKRLYQRQQRGG
Specificity:	RNF25 antibody was raised against the middle region of RNF25
Purification:	Affinity purified

Target Details

Target:	RNF25
Alternative Name:	RNF25 (RNF25 Products)
Background:	RNF25 contains a RING finger motif. The mouse counterpart of this protein has been shown to interact with Rel α , the p65 subunit of NF- κ B (NFKB), and modulate NFKB-mediated transcription activity. The mouse protein also binds ubiquitin-conjugating enzymes (E2s) and is

Target Details

a substrate for E2-dependent ubiquitination.

Molecular Weight: 51 kDa (MW of target protein)

Application Details

Application Notes: WB: 0.5 µg/mL, IHC: 4-8 µg/mL
Optimal conditions should be determined by the investigator.

Comment: RNF25 Blocking Peptide, catalog no. 33R-1793, is also available for use as a blocking control in assays to test for specificity of this RNF25 antibody

Restrictions: For Research Use only

Handling

Format: Lyophilized

Reconstitution: Lyophilized powder. Add distilled water for a 1 mg/mL concentration of RNF25 antibody in PBS

Concentration: Lot specific

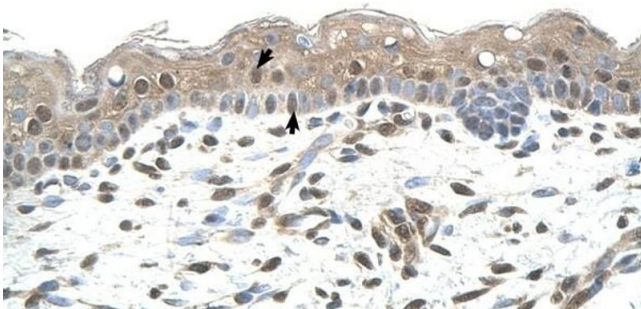
Buffer: PBS

Handling Advice: Avoid repeated freeze/thaw cycles.
Dilute only prior to immediate use.

Storage: 4 °C/-20 °C

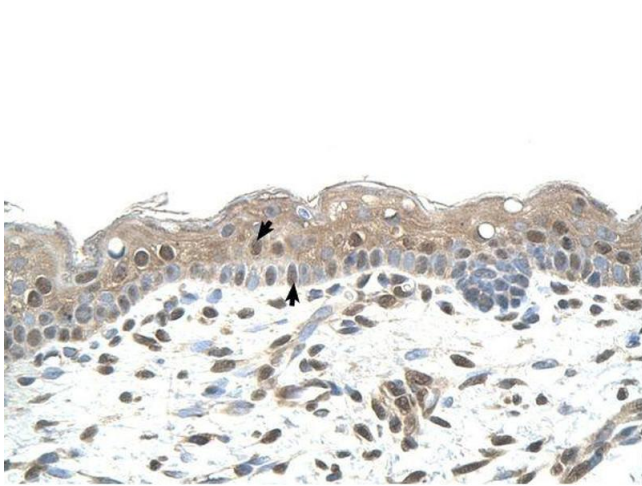
Storage Comment: Store at 2-8 °C for short periods. For longer periods of storage, store at -20 °C.

Images



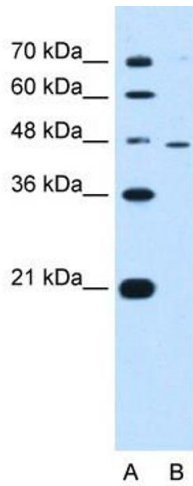
Immunohistochemistry

Image 1. RNF25 antibody was used for immunohistochemistry at a concentration of 4-8 µg/ml to stain Squamous epithelial cells (arrows) in Human Skin. Magnification is at 400X



Immunohistochemistry

Image 2. RNF25 antibody was used for immunohistochemistry at a concentration of 4-8 ug/ml. Magnification is at 400X



Western Blotting

Image 3. RNF25 antibody used at 0.5 ug/ml to detect target protein.