

Datasheet for ABIN631392

**anti-UBE2E2 antibody****2** Images[Go to Product page](#)

## Overview

Quantity:	100 µL
Target:	UBE2E2
Reactivity:	Human, Rat, Mouse, Dog
Host:	Rabbit
Clonality:	Polyclonal
Conjugate:	This UBE2E2 antibody is un-conjugated
Application:	Western Blotting (WB), Immunohistochemistry (IHC)

## Product Details

Immunogen:	UBE2 E2 antibody was raised using a synthetic peptide corresponding to a region with amino acids GDQRESVQQEPEREQVQPKKKEGKISSKTAAKLSTSAKRIQKELAEITLD
Purification:	Affinity purified

## Target Details

Target:	UBE2E2
Alternative Name:	UBE2E2 ( <a href="#">UBE2E2 Products</a> )
Background:	UBE2E2 catalyzes the covalent attachment of ubiquitin to other proteins.
Molecular Weight:	22 kDa (MW of target protein)

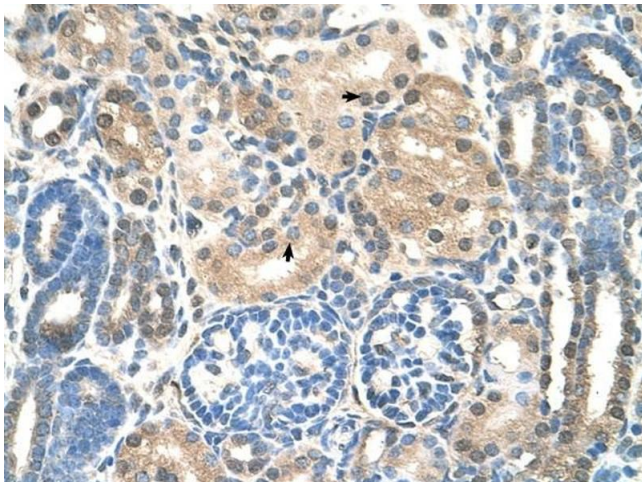
## Application Details

Application Notes:	WB: 0.125 µg/mL, IHC: 4-8 µg/mL Optimal conditions should be determined by the investigator.
Comment:	UBE2E2 Blocking Peptide, catalog no. 33R-3206, is also available for use as a blocking control in assays to test for specificity of this UBE2E2 antibody
Restrictions:	For Research Use only

## Handling

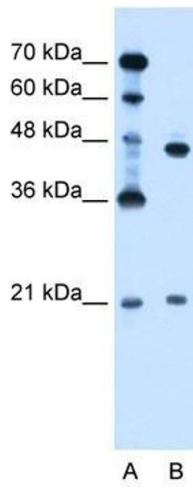
Format:	Lyophilized
Reconstitution:	Lyophilized powder. Add distilled water for a 1 mg/mL concentration of UBE0 2 antibody in PBS
Concentration:	Lot specific
Buffer:	PBS
Handling Advice:	Avoid repeated freeze/thaw cycles.
Storage:	4 °C/-20 °C
Storage Comment:	Store at 2-8 °C for short periods. For longer periods of storage, store at -20 °C.

## Images



### Immunohistochemistry

**Image 1.** UBE2E2 antibody was used for immunohistochemistry at a concentration of 4-8 ug/ml to stain Epithelial cells of renal tubule (arrows) in Human Kidney. Magnification is at 400X



### Western Blotting

**Image 2.** UBE2E2 antibody used at 0.125 ug/ml to detect target protein.