

Datasheet for ABIN631400  
**anti-PNPLA5 antibody (C-Term)**



[Go to Product page](#)

1 Image

## Overview

|                      |                                       |
|----------------------|---------------------------------------|
| Quantity:            | 100 µL                                |
| Target:              | PNPLA5                                |
| Binding Specificity: | C-Term                                |
| Reactivity:          | Human                                 |
| Host:                | Rabbit                                |
| Clonality:           | Polyclonal                            |
| Conjugate:           | This PNPLA5 antibody is un-conjugated |
| Application:         | Western Blotting (WB)                 |

## Product Details

|               |   |
|---------------|---|
| Immunogen:    | PNPLA5 antibody was raised using the C terminal of PNPLA5 corresponding to a region with amino acids NMALEVFSRTKAQLLGPISPPATRVLETSPLQPQIAPHREELGPTHQA |
| Specificity:  | PNPLA5 antibody was raised against the C terminal of PNPLA5   |
| Purification: | Affinity purified   |

## Target Details

|                   |  |
|-------------------|--|
| Target:           | PNPLA5   |
| Alternative Name: | PNPLA5 ( <a href="#">PNPLA5 Products</a> )   |
| Background:       | Human patatin-like phospholipases, such as PNPLA5, have been implicated in regulation of adipocyte differentiation and have been induced by metabolic stimuli. |

## Target Details

---

Molecular Weight: 48 kDa (MW of target protein)

## Application Details

---

Application Notes: WB: 1 µg/mL  
Optimal conditions should be determined by the investigator.

Comment: PNPLA5 Blocking Peptide, catalog no. 33R-6789, is also available for use as a blocking control in assays to test for specificity of this PNPLA5 antibody

Restrictions: For Research Use only

## Handling

---

Format: Lyophilized

Reconstitution: Lyophilized powder. Add distilled water for a 1 mg/mL concentration of PNPLA5 antibody in PBS

Concentration: Lot specific

Buffer: PBS

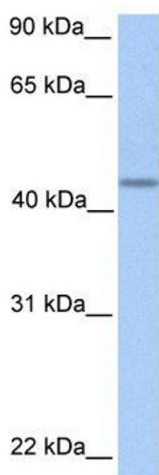
Handling Advice: Avoid repeated freeze/thaw cycles.  
Dilute only prior to immediate use.

Storage: 4 °C/-20 °C

Storage Comment: Store at 2-8 °C for short periods. For longer periods of storage, store at -20 °C.

## Images

---



### Western Blotting

**Image 1.** PNPLA5 antibody used at 1 ug/ml to detect target protein.