

Datasheet for ABIN631412
anti-Klotho antibody (N-Term)



[Go to Product page](#)

1 Image

Overview

Quantity:	100 µL
Target:	Klotho (KL)
Binding Specificity:	N-Term
Reactivity:	Human
Host:	Rabbit
Clonality:	Polyclonal
Conjugate:	This Klotho antibody is un-conjugated
Application:	Western Blotting (WB)

Product Details

Immunogen:	Klotho antibody was raised using the N terminal of KL corresponding to a region with amino acids FPDGFLWAVGSAAYQTEGGWQQHKGKASIWDTFTHHPLAPPGDSRNASLP
Specificity:	Klotho antibody was raised against the n terminal of KL
Purification:	Affinity purified

Target Details

Target:	Klotho (KL)
Alternative Name:	Klotho (KL Products)
Background:	This gene encodes a type-I membrane protein that is related to beta-glucosidases. Reduced production of this protein has been observed in patients with chronic renal failure (CRF).

Target Details

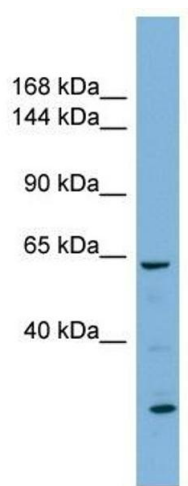
Molecular Weight:	60 kDa (MW of target protein)
Pathways:	Fc-epsilon Receptor Signaling Pathway , EGFR Signaling Pathway , Neurotrophin Signaling Pathway , Hormone Activity , Growth Factor Binding

Application Details

Application Notes:	WB: 1 µg/mL Optimal conditions should be determined by the investigator.
Comment:	Klotho Blocking Peptide, catalog no. 33R-3012, is also available for use as a blocking control in assays to test for specificity of this Klotho antibody
Restrictions:	For Research Use only

Handling

Format:	Lyophilized
Reconstitution:	Lyophilized powder. Add distilled water for a 1 mg/mL concentration of KL antibody in PBS
Concentration:	Lot specific
Buffer:	PBS
Handling Advice:	Avoid repeated freeze/thaw cycles. Dilute only prior to immediate use.
Storage:	4 °C/-20 °C
Storage Comment:	Store at 2-8 °C for short periods. For longer periods of storage, store at -20 °C.



Western Blotting

Image 1. Klotho antibody used at 1 ug/ml to detect target protein.