

## Datasheet for ABIN631414 **anti-AMOTL1 antibody (N-Term)**



[Go to Product page](#)

### 1 Image

#### Overview

Quantity:	100 µL
Target:	AMOTL1
Binding Specificity:	N-Term
Reactivity:	Human, Mouse
Host:	Rabbit
Clonality:	Polyclonal
Conjugate:	This AMOTL1 antibody is un-conjugated
Application:	Western Blotting (WB)

#### Product Details

Immunogen:	AMOTL1 antibody was raised using the N terminal of AMOTL1 corresponding to a region with amino acids LTQEDPQMVYQSARQEPQGQEHQVDNTVMEKQVRSTQPQQNNEELPTYEE
Specificity:	AMOTL1 antibody was raised against the N terminal of AMOTL1
Purification:	Affinity purified

#### Target Details

Target:	AMOTL1
Alternative Name:	AMOTL1 ( <a href="#">AMOTL1 Products</a> )
Background:	AMOTL1 is a peripheral membrane protein that is a component of tight junctions or TJs. TJs form an apical junctional structure and act to control paracellular permeability and maintain cell polarity. This protein is related to angiominin, an angiostatin binding protein that regulates

## Target Details

---

endothelial cell migration and capillary formation.

Molecular Weight: 106 kDa (MW of target protein)

## Application Details

---

Application Notes: WB: 1 µg/mL  
Optimal conditions should be determined by the investigator.

Comment: AMOTL1 Blocking Peptide, catalog no. 33R-5487, is also available for use as a blocking control in assays to test for specificity of this AMOTL1 antibody

Restrictions: For Research Use only

## Handling

---

Format: Lyophilized

Reconstitution: Lyophilized powder. Add distilled water for a 1 mg/mL concentration of AMOTL1 antibody in PBS

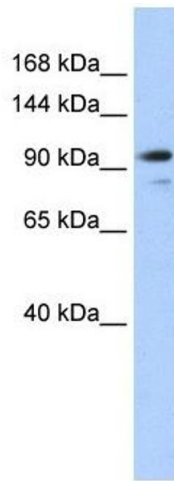
Concentration: Lot specific

Buffer: PBS

Handling Advice: Avoid repeated freeze/thaw cycles.  
Dilute only prior to immediate use.

Storage: 4 °C/-20 °C

Storage Comment: Store at 2-8 °C for short periods. For longer periods of storage, store at -20 °C.



### Western Blotting

**Image 1.** AMOTL1 antibody used at 1 ug/ml to detect target protein.