

Datasheet for ABIN631416  
**anti-ATP6V0E2 antibody (Middle Region)**



[Go to Product page](#)

1 Image

## Overview

Quantity:	100 µL
Target:	ATP6V0E2
Binding Specificity:	Middle Region
Reactivity:	Human
Host:	Rabbit
Clonality:	Polyclonal
Conjugate:	This ATP6V0E2 antibody is un-conjugated
Application:	Western Blotting (WB)

## Product Details

Immunogen:	ATP6 V6 2 antibody was raised using the middle region of ATP6 6 2 corresponding to a region with amino acids TVAPLSLTTPSSGPSPTQLCLVTSSLLLAPRDPDPQGLPGSWKSSQSSQP
Specificity:	ATP6 V6 2 antibody was raised against the middle region of ATP6 6 2
Purification:	Affinity purified

## Target Details

Target:	ATP6V0E2
Alternative Name:	ATP6V0E2 ( <a href="#">ATP6V0E2 Products</a> )
Background:	Vacuolar ATPase is responsible for acidifying a variety of intracellular compartments in eukaryotic cells. Multisubunit vacuolar-type proton pumps, or H(+)-ATPases, acidify various intracellular compartments, such as vacuoles, clathrin-coated and synaptic vesicles,

## Target Details

---

endosomes, lysosomes, and chromaffin granules.

Molecular Weight: 22 kDa (MW of target protein)

Pathways: [Transition Metal Ion Homeostasis](#), [Proton Transport](#)

## Application Details

---

Application Notes: WB: 1 µg/mL

Optimal conditions should be determined by the investigator.

Comment: ATP6V0E2 Blocking Peptide, catalog no. 33R-9342, is also available for use as a blocking control in assays to test for specificity of this ATP6V0E2 antibody

Restrictions: For Research Use only

## Handling

---

Format: Lyophilized

Reconstitution: Lyophilized powder. Add distilled water for a 1 mg/mL concentration of ATP0 0 2 antibody in PBS

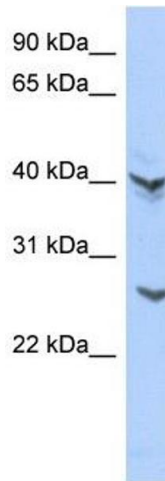
Concentration: Lot specific

Buffer: PBS

Handling Advice: Avoid repeated freeze/thaw cycles.  
Dilute only prior to immediate use.

Storage: 4 °C/-20 °C

Storage Comment: Store at 2-8 °C for short periods. For longer periods of storage, store at -20 °C.



### Western Blotting

**Image 1.** ATP6V0E2 antibody used at 1 ug/ml to detect target protein.