

Datasheet for ABIN631433  
**anti-RAB1A antibody (Middle Region)**



[Go to Product page](#)

1 Image

## Overview

Quantity:	100 µL
Target:	RAB1A
Binding Specificity:	Middle Region
Reactivity:	Human, Mouse, Rat, Dog
Host:	Rabbit
Clonality:	Polyclonal
Conjugate:	This RAB1A antibody is un-conjugated
Application:	Western Blotting (WB)

## Product Details

Immunogen:	RAB1 A antibody was raised using the middle region of RAB1 corresponding to a region with amino acids AKNATNVEQSFMTMAAEIKKRMGPGATAGGAEKSNVKIQSTPVKQSGGGC
Specificity:	RAB1 A antibody was raised against the middle region of RAB1
Purification:	Affinity purified

## Target Details

Target:	RAB1A
Alternative Name:	RAB1A ( <a href="#">RAB1A Products</a> )
Background:	This gene encodes a member of the Ras superfamily of GTPases. Members of the gene family cycle between inactive GDP-bound and active GTP-bound forms.

## Target Details

Molecular Weight: 23 kDa (MW of target protein)

Pathways: [SARS-CoV-2 Protein Interactome](#)

## Application Details

Application Notes: WB: 1 µg/mL

Optimal conditions should be determined by the investigator.

Comment: RAB1A Blocking Peptide, catalog no. 33R-1303, is also available for use as a blocking control in assays to test for specificity of this RAB1A antibody

Restrictions: For Research Use only

## Handling

Format: Lyophilized

Reconstitution: Lyophilized powder. Add distilled water for a 1 mg/mL concentration of RAB0 antibody in PBS

Concentration: Lot specific

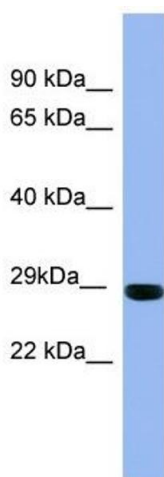
Buffer: PBS

Handling Advice: Avoid repeated freeze/thaw cycles.  
Dilute only prior to immediate use.

Storage: 4 °C/-20 °C

Storage Comment: Store at 2-8 °C for short periods. For longer periods of storage, store at -20 °C.

## Images



### Western Blotting

**Image 1.** RAB1A antibody used at 1 µg/ml to detect target protein.