

Datasheet for ABIN631440 **anti-ASL antibody (N-Term)**



[Go to Product page](#)

1 Image

Overview

Quantity:	100 µL
Target:	ASL
Binding Specificity:	N-Term
Reactivity:	Human, Mouse, Rat
Host:	Rabbit
Clonality:	Polyclonal
Conjugate:	This ASL antibody is un-conjugated
Application:	Western Blotting (WB)

Product Details

Immunogen:	ASL antibody was raised using the N terminal of ASL corresponding to a region with amino acids GATAGKLHTGRSRNDQVVTDLRLWMRQTCSTLSGLLWELIRTMVDRAEAE
Specificity:	ASL antibody was raised against the N terminal of ASL
Purification:	Affinity purified

Target Details

Target:	ASL
Alternative Name:	ASL (ASL Products)
Background:	ASL is a member of the lyase 1 family. The protein forms a cytosolic homotetramer and primarily catalyzes the reversible hydrolytic cleavage of argininosuccinate into arginine and fumarate, an essential step in the liver in detoxifying ammonia via the urea cycle. Mutations in

Target Details

its gene result in the autosomal recessive disorder argininosuccinic aciduria, or argininosuccinic acid lyase deficiency.

Molecular Weight: 52 kDa (MW of target protein)

Pathways: [Response to Growth Hormone Stimulus](#)

Application Details

Application Notes: WB: 0.25 µg/mL
Optimal conditions should be determined by the investigator.

Comment: ASL Blocking Peptide, catalog no. 33R-3175, is also available for use as a blocking control in assays to test for specificity of this ASL antibody

Restrictions: For Research Use only

Handling

Format: Lyophilized

Reconstitution: Lyophilized powder. Add distilled water for a 1 mg/mL concentration of ASL antibody in PBS

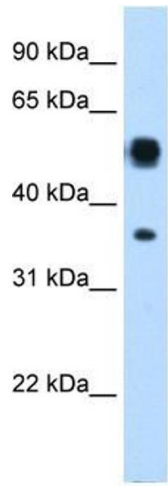
Concentration: Lot specific

Buffer: PBS

Handling Advice: Avoid repeated freeze/thaw cycles.
Dilute only prior to immediate use.

Storage: 4 °C/-20 °C

Storage Comment: Store at 2-8 °C for short periods. For longer periods of storage, store at -20 °C.



Western Blotting

Image 1. ASL antibody used at 0.25 ug/ml to detect target protein.