

Datasheet for ABIN631441
anti-Keratin 2 antibody (Middle Region)



[Go to Product page](#)

2 Images

Overview

Quantity:	100 µL
Target:	Keratin 2 (KRT2)
Binding Specificity:	Middle Region
Reactivity:	Human, Dog
Host:	Rabbit
Clonality:	Polyclonal
Conjugate:	This Keratin 2 antibody is un-conjugated
Application:	Western Blotting (WB), Immunohistochemistry (IHC)

Product Details

Immunogen:	KRT2 A antibody was raised using the middle region of Krt2 corresponding to a region with amino acids EVKAQYEEIAQRSKEEAEALYHSKYEELQVTVGRHGDLSLKEIKIEISELN
Specificity:	KRT2 A antibody was raised against the middle region of Krt2
Purification:	Affinity purified

Target Details

Target:	Keratin 2 (KRT2)
Alternative Name:	KRT2A (KRT2 Products)
Background:	KRT2A is a member of the keratin gene family. The type II cytokeratins consist of basic or neutral proteins which are arranged in pairs of heterotypic keratin chains coexpressed during differentiation of simple and stratified epithelial tissues. This type II cytokeratin is expressed

Target Details

largely in the upper spinous layer of epidermal keratinocytes and mutations in this gene have been associated with bullous congenital ichthyosiform erythroderma.

Molecular Weight: 70 kDa (MW of target protein)

Application Details

Application Notes: WB: 0.5 µg/mL, IHC: 4-8 µg/mL
Optimal conditions should be determined by the investigator.

Comment: KRT2A Blocking Peptide, catalog no. 33R-2793, is also available for use as a blocking control in assays to test for specificity of this KRT2A antibody

Restrictions: For Research Use only

Handling

Format: Lyophilized

Reconstitution: Lyophilized powder. Add distilled water for a 1 mg/mL concentration of KRT0 antibody in PBS

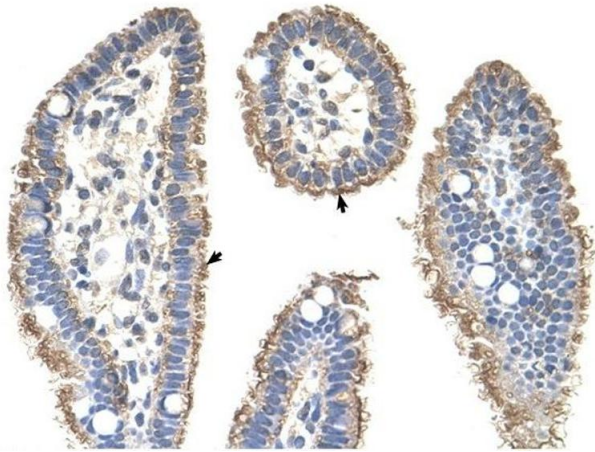
Concentration: Lot specific

Buffer: PBS

Handling Advice: Avoid repeated freeze/thaw cycles.
Dilute only prior to immediate use.

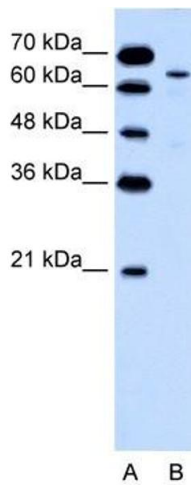
Storage: 4 °C/-20 °C

Storage Comment: Store at 2-8 °C for short periods. For longer periods of storage, store at -20 °C.



Immunohistochemistry

Image 1. KRT2A antibody was used for immunohistochemistry at a concentration of 4-8 ug/ml to stain Epithelial cells of intestinal villus (arrows) in Human Intestine. Magnification is at 400X



Western Blotting

Image 2. KRT2A antibody used at 0.5 ug/ml to detect target protein.