

## Datasheet for ABIN631444 **anti-BAAT antibody (N-Term)**



[Go to Product page](#)

### 1 Image

#### Overview

Quantity:	100 µL
Target:	BAAT
Binding Specificity:	N-Term
Reactivity:	Human
Host:	Rabbit
Clonality:	Polyclonal
Conjugate:	This BAAT antibody is un-conjugated
Application:	Western Blotting (WB)

#### Product Details

Immunogen:	BAAT antibody was raised using the N terminal of BAAT corresponding to a region with amino acids IQLTATPV <sup>S</sup> ALVDEPVHIRATGLIPFQMVSFQASLEDENGDMFY <sup>S</sup> QAHYR
Specificity:	BAAT antibody was raised against the N terminal of BAAT
Purification:	Affinity purified

#### Target Details

Target:	BAAT
Alternative Name:	BAAT ( <a href="#">BAAT Products</a> )
Background:	BAAT is a liver enzyme that catalyzes the transfer of C24 bile acids from the acyl-CoA thioester to either glycine or taurine, the second step in the formation of bile acid-amino acid conjugates. The bile acid conjugates then act as a detergent in the gastrointestinal tract, which enhances

## Target Details

---

lipid and fat-soluble vitamin absorption. Defects in this gene are a cause of familial hypercholanemia (FHCA).

Molecular Weight: 46 kDa (MW of target protein)

## Application Details

---

Application Notes: WB: 1 µg/mL  
Optimal conditions should be determined by the investigator.

Comment: BAAT Blocking Peptide, catalog no. 33R-4118, is also available for use as a blocking control in assays to test for specificity of this BAAT antibody

Restrictions: For Research Use only

## Handling

---

Format: Lyophilized

Reconstitution: Lyophilized powder. Add distilled water for a 1 mg/mL concentration of BAAT antibody in PBS

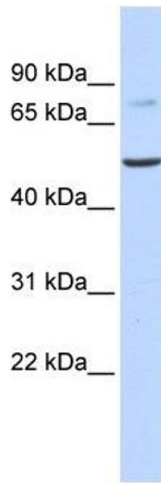
Concentration: Lot specific

Buffer: PBS

Handling Advice: Avoid repeated freeze/thaw cycles.  
Dilute only prior to immediate use.

Storage: 4 °C/-20 °C

Storage Comment: Store at 2-8 °C for short periods. For longer periods of storage, store at -20 °C.



### Western Blotting

**Image 1.** BAAT antibody used at 1 ug/ml to detect target protein.