

Datasheet for ABIN631449

anti-ALG2 antibody**1** Image[Go to Product page](#)

Overview

Quantity:	100 µL
Target:	ALG2
Reactivity:	Human, Mouse, Rat
Host:	Rabbit
Clonality:	Polyclonal
Conjugate:	This ALG2 antibody is un-conjugated
Application:	Western Blotting (WB)

Product Details

Immunogen:	ALG2 antibody was raised using a synthetic peptide corresponding to a region with amino acids QSDLGQYVTFILRSFSDKQKISLLHSCTCVLYTPSNEHFGIVPLEAMYMQC
Purification:	Affinity purified

Target Details

Target:	ALG2
Alternative Name:	ALG2 (ALG2 Products)
Background:	ALG2 is a member of the glycosyltransferase 1 family. It acts as an alpha 1,3 mannosyltransferase, mannosylating Man(2)GlcNAc(2)-dolichol diphosphate and Man(1)GlcNAc(2)-dolichol diphosphate to form Man(3)GlcNAc(2)-dolichol diphosphate. Defects in this gene have been associated with congenital disorder of glycosylation type 1h (CDG-1h).
Molecular Weight:	47 kDa (MW of target protein)

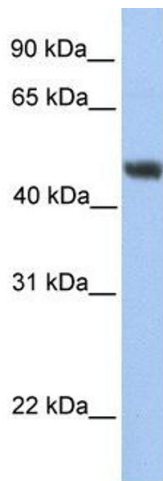
Application Details

Application Notes:	WB: 1 µg/mL Optimal conditions should be determined by the investigator.
Comment:	ALG2 Blocking Peptide, catalog no. 33R-7721, is also available for use as a blocking control in assays to test for specificity of this ALG2 antibody
Restrictions:	For Research Use only

Handling

Format:	Lyophilized
Reconstitution:	Lyophilized powder. Add distilled water for a 1 mg/mL concentration of ALG2 antibody in PBS
Concentration:	Lot specific
Buffer:	PBS
Handling Advice:	Avoid repeated freeze/thaw cycles.
Storage:	4 °C/-20 °C
Storage Comment:	Store at 2-8 °C for short periods. For longer periods of storage, store at -20 °C.

Images



Western Blotting

Image 1. ALG2 antibody used at 1 µg/ml to detect target protein.