

Datasheet for ABIN631450  
**anti-Clavesin 1 antibody (Middle Region)**



[Go to Product page](#)

1 Image

## Overview

Quantity:	100 µL
Target:	Clavesin 1 (CLVS1)
Binding Specificity:	Middle Region
Reactivity:	Rat, Mouse, Human
Host:	Rabbit
Clonality:	Polyclonal
Conjugate:	This Clavesin 1 antibody is un-conjugated
Application:	Western Blotting (WB)

## Product Details

Immunogen:	RLBP1 L1 antibody was raised using the middle region of RLBP1 1 corresponding to a region with amino acids MFKNFKADDPGIKRALIDGFPVLENRDHYGRKILLLLFAANWDQSRNSFT
Specificity:	RLBP1 L1 antibody was raised against the middle region of RLBP1 1
Purification:	Affinity purified

## Target Details

Target:	Clavesin 1 (CLVS1)
Alternative Name:	RLBP1L1 ( <a href="#">CLVS1 Products</a> )
Background:	RLBP1L1 contains 1 CRAL-TRIO domain. It may be used as a marker for human hepatocellular carcinomas.

## Target Details

---

Molecular Weight: 41 kDa (MW of target protein)

## Application Details

---

Application Notes: WB: 1 µg/mL  
Optimal conditions should be determined by the investigator.

Comment: RLBP1L1 Blocking Peptide, catalog no. 33R-5996, is also available for use as a blocking control in assays to test for specificity of this RLBP1L1 antibody

Restrictions: For Research Use only

## Handling

---

Format: Lyophilized

Reconstitution: Lyophilized powder. Add distilled water for a 1 mg/mL concentration of RLBP0 1 antibody in PBS

Concentration: Lot specific

Buffer: PBS

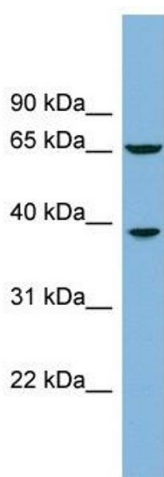
Handling Advice: Avoid repeated freeze/thaw cycles.  
Dilute only prior to immediate use.

Storage: 4 °C/-20 °C

Storage Comment: Store at 2-8 °C for short periods. For longer periods of storage, store at -20 °C.

## Images

---



### Western Blotting

**Image 1.** RLBP1L1 antibody used at 1 ug/ml to detect target protein.