

Datasheet for ABIN631451 **anti-GALE antibody (N-Term)**



[Go to Product page](#)

1 Image

Overview

Quantity:	100 µL
Target:	GALE
Binding Specificity:	N-Term
Reactivity:	Human
Host:	Rabbit
Clonality:	Polyclonal
Conjugate:	This GALE antibody is un-conjugated
Application:	Western Blotting (WB)

Product Details

Immunogen:	GALE antibody was raised using the N terminal of GALE corresponding to a region with amino acids AEKVLVTGGAGYIGSHTVLELLEAGYLPVVIDNFHNAFRGGGSLPESLRR
Specificity:	GALE antibody was raised against the N terminal of GALE
Purification:	Affinity purified

Target Details

Target:	GALE
Alternative Name:	GALE (GALE Products)
Background:	GALE is an UDP-galactose-4-epimerase which catalyzes two distinct but analogous reactions: the epimerization of UDP-glucose to UDP-galactose, and the epimerization of UDP-N-acetylglucosamine to UDP-N-acetylgalactosamine. The bifunctional nature of the enzyme has

Target Details

the important metabolic consequence that mutant cells (or individuals) are dependent not only on exogenous galactose, but also on exogenous N-acetylgalactosamine as a necessary precursor for the synthesis of glycoproteins and glycolipids. Mutations in this gene result in epimerase-deficiency galactosemia, also referred to as galactosemia type 3, a disease characterized by liver damage, early-onset cataracts, deafness and mental retardation.

Molecular Weight: 38 kDa (MW of target protein)

Pathways: [Response to Water Deprivation](#), [Cellular Glucan Metabolic Process](#)

Application Details

Application Notes: WB: 1 µg/mL
Optimal conditions should be determined by the investigator.

Comment: GALE Blocking Peptide, catalog no. 33R-1135, is also available for use as a blocking control in assays to test for specificity of this GALE antibody

Restrictions: For Research Use only

Handling

Format: Lyophilized

Reconstitution: Lyophilized powder. Add distilled water for a 1 mg/mL concentration of GALE antibody in PBS

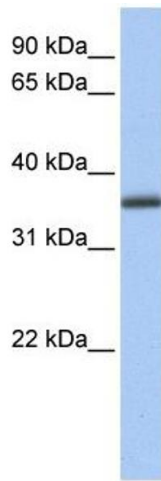
Concentration: Lot specific

Buffer: PBS

Handling Advice: Avoid repeated freeze/thaw cycles.
Dilute only prior to immediate use.

Storage: 4 °C/-20 °C

Storage Comment: Store at 2-8 °C for short periods. For longer periods of storage, store at -20 °C.



Western Blotting

Image 1. GALE antibody used at 1 ug/ml to detect target protein.