

Datasheet for ABIN631470 **anti-METAP2 antibody (N-Term)**



[Go to Product page](#)

1 Image

Overview

Quantity:	100 µL
Target:	METAP2
Binding Specificity:	N-Term
Reactivity:	Human, Mouse, Rat
Host:	Rabbit
Clonality:	Polyclonal
Conjugate:	This METAP2 antibody is un-conjugated
Application:	Western Blotting (WB)

Product Details

Immunogen:	METAP2 antibody was raised using the N terminal of METAP2 corresponding to a region with amino acids ATGKKKKKKKKRGPVKVQTDPPSPICDLYPNGVFPKGQECEYPPTQDGR
Specificity:	METAP2 antibody was raised against the N terminal of METAP2
Purification:	Affinity purified

Target Details

Target:	METAP2
Alternative Name:	METAP2 (METAP2 Products)
Background:	METAP2 is a member of the methionyl aminopeptidase family and encodes a protein that binds 2 cobalt or manganese ions. This protein functions both by protecting the alpha subunit of eukaryotic initiation factor 2 from inhibitory phosphorylation and by removing the amino-

Target Details

terminal methionine residue from nascent protein. Increased expression of this gene is associated with various forms of cancer and the anti-cancer drugs fumagillin and ovalicin inhibit the protein by irreversibly binding to its active site.

Molecular Weight: 53 kDa (MW of target protein)

Pathways: [Regulation of G-Protein Coupled Receptor Protein Signaling](#)

Application Details

Application Notes: WB: 0.5 µg/mL
Optimal conditions should be determined by the investigator.

Comment: METAP2 Blocking Peptide, catalog no. 33R-1556, is also available for use as a blocking control in assays to test for specificity of this METAP2 antibody

Restrictions: For Research Use only

Handling

Format: Lyophilized

Reconstitution: Lyophilized powder. Add distilled water for a 1 mg/mL concentration of METAP2 antibody in PBS

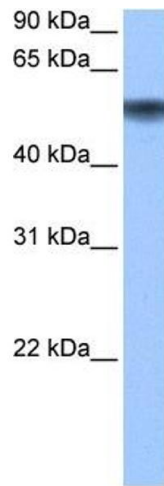
Concentration: Lot specific

Buffer: PBS

Handling Advice: Avoid repeated freeze/thaw cycles.
Dilute only prior to immediate use.

Storage: 4 °C/-20 °C

Storage Comment: Store at 2-8 °C for short periods. For longer periods of storage, store at -20 °C.



Western Blotting

Image 1. METAP2 antibody used at 0.5 ug/ml to detect target protein.