

Datasheet for ABIN631484

**anti-TUBA4A antibody (Middle Region)**[Go to Product page](#)**1** Image

## Overview

Quantity:	100 µL
Target:	TUBA4A
Binding Specificity:	Middle Region
Reactivity:	Human, Mouse, Rat, Drosophila melanogaster, Arabidopsis, C. elegans
Host:	Rabbit
Clonality:	Polyclonal
Conjugate:	This TUBA4A antibody is un-conjugated
Application:	Western Blotting (WB)

## Product Details

Immunogen:	alpha Tubulin 4 A antibody was raised using the middle region of TUBA4 corresponding to a region with amino acids GGTGSGFTSLLMERLSVDYGKSKLEFSIYPAPQVSTAVVEPYNSILTTH
Specificity:	Alpha Tubulin 4 A antibody was raised against the middle region of TUBA4
Purification:	Affinity purified

## Target Details

Target:	TUBA4A
Alternative Name:	alpha Tubulin 4A ( <a href="#">TUBA4A Products</a> )
Background:	Microtubules of the eukaryotic cytoskeleton perform essential and diverse functions and are composed of a heterodimer of alpha and beta tubulin. The genes encoding these microtubule constituents are part of the tubulin superfamily.

## Target Details

Molecular Weight:	50 kDa (MW of target protein)
Pathways:	<a href="#">Microtubule Dynamics, M Phase</a>

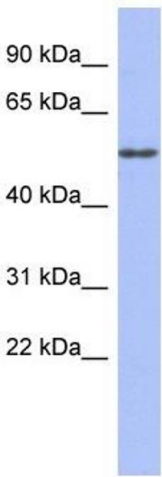
## Application Details

Application Notes:	WB: 1 µg/mL Optimal conditions should be determined by the investigator.
Comment:	alpha Tubulin 4A Blocking Peptide, catalog no. 33R-3301, is also available for use as a blocking control in assays to test for specificity of this alpha Tubulin 4A antibody
Restrictions:	For Research Use only

## Handling

Format:	Lyophilized
Reconstitution:	Lyophilized powder. Add distilled water for a 1 mg/mL concentration of TUBA0 antibody in PBS
Concentration:	Lot specific
Buffer:	PBS
Handling Advice:	Avoid repeated freeze/thaw cycles. Dilute only prior to immediate use.
Storage:	4 °C/-20 °C
Storage Comment:	Store at 2-8 °C for short periods. For longer periods of storage, store at -20 °C.

## Images



**Western Blotting**

**Image 1.** alpha Tubulin 4A antibody used at 1 ug/ml to detect target protein.