

## Datasheet for ABIN631523 **anti-PPP2R5A antibody (N-Term)**



[Go to Product page](#)

### 1 Image

#### Overview

Quantity:	100 µL
Target:	PPP2R5A
Binding Specificity:	N-Term
Reactivity:	Mouse, Human, Rat
Host:	Rabbit
Clonality:	Polyclonal
Conjugate:	This PPP2R5A antibody is un-conjugated
Application:	Western Blotting (WB)

#### Product Details

Immunogen:	PPP2 R2 antibody was raised using the N terminal of PPP2 2 corresponding to a region with amino acids YVSTNRGVIVESAYSDIVKMISANIFRTLPPSDNPDFDPEEDEPTLEASW
Specificity:	PPP2 R2 antibody was raised against the N terminal of PPP2 2
Purification:	Affinity purified

#### Target Details

Target:	PPP2R5A
Alternative Name:	PPP2R5A ( <a href="#">PPP2R5A Products</a> )
Background:	PPP2R5A belongs to the phosphatase 2A regulatory subunit B family. Protein phosphatase 2A is one of the four major Ser/Thr phosphatases, and it is implicated in the negative control of cell growth and division. It consists of a common heteromeric core enzyme, which is composed of

## Target Details

---

a catalytic subunit and a constant regulatory subunit, that associates with a variety of regulatory subunits. The B regulatory subunit might modulate substrate selectivity and catalytic activity.

Molecular Weight: 56 kDa (MW of target protein)

Pathways: [PI3K-Akt Signaling](#)

## Application Details

---

Application Notes: WB: 1 µg/mL  
Optimal conditions should be determined by the investigator.

Comment: PPP2R5A Blocking Peptide, ABIN936266, is also available for use as a blocking control in assays to test for specificity of this PPP2R5A antibody

Restrictions: For Research Use only

## Handling

---

Format: Lyophilized

Reconstitution: Lyophilized powder. Add distilled water for a 1 mg/mL concentration of PPP0 0 antibody in PBS

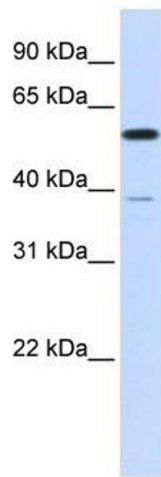
Concentration: Lot specific

Buffer: PBS

Handling Advice: Avoid repeated freeze/thaw cycles.  
Dilute only prior to immediate use.

Storage: 4 °C/-20 °C

Storage Comment: Store at 2-8 °C for short periods. For longer periods of storage, store at -20 °C.



### Western Blotting

**Image 1.** PPP2R5A antibody used at 1 ug/ml to detect target protein.