

Datasheet for ABIN631539  
**anti-PWWP2A antibody (C-Term)**



[Go to Product page](#)

1 Image

## Overview

Quantity:	100 µL
Target:	PWWP2A
Binding Specificity:	C-Term
Reactivity:	Human, Rat
Host:	Rabbit
Clonality:	Polyclonal
Conjugate:	This PWWP2A antibody is un-conjugated
Application:	Western Blotting (WB)

## Product Details

Immunogen:	PWWP2 A antibody was raised using the C terminal of PWWP2 corresponding to a region with amino acids PQSRCTSTRSAGLNKQQLLHQTVTSPAAPLQCLTDHCGFRLGALKLTVKR
Specificity:	PWWP2 A antibody was raised against the C terminal of PWWP2
Purification:	Affinity purified

## Target Details

Target:	PWWP2A
Alternative Name:	PWWP2A ( <a href="#">PWWP2A Products</a> )
Background:	PWWP2A contains 1 PWWP domain. The exact function of PWWP2A remains unknown.
Molecular Weight:	61 kDa (MW of target protein)

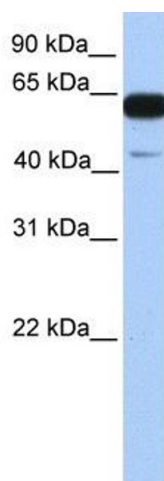
## Application Details

Application Notes:	WB: 1 µg/mL Optimal conditions should be determined by the investigator.
Comment:	PWWP2A Blocking Peptide, catalog no. 33R-7313, is also available for use as a blocking control in assays to test for specificity of this PWWP2A antibody
Restrictions:	For Research Use only

## Handling

Format:	Lyophilized
Reconstitution:	Lyophilized powder. Add distilled water for a 1 mg/mL concentration of PWWP0 antibody in PBS
Concentration:	Lot specific
Buffer:	PBS
Handling Advice:	Avoid repeated freeze/thaw cycles. Dilute only prior to immediate use.
Storage:	4 °C/-20 °C
Storage Comment:	Store at 2-8 °C for short periods. For longer periods of storage, store at -20 °C.

## Images



### Western Blotting

**Image 1.** PWWP2A antibody used at 1 ug/ml to detect target protein.