

Datasheet for ABIN631542

anti-PWWP2B antibody (N-Term)[Go to Product page](#)**1** Image

Overview

Quantity:	100 µL
Target:	PWWP2B
Binding Specificity:	N-Term
Reactivity:	Human
Host:	Rabbit
Clonality:	Polyclonal
Conjugate:	This PWWP2B antibody is un-conjugated
Application:	Western Blotting (WB)

Product Details

Immunogen:	PWWP2 B antibody was raised using the N terminal of PWWP2 corresponding to a region with amino acids ILLDCTKKSGLFGLPPLAPLPQVDESPVND SHGRAPEEGDAEVMQLGSSS
Specificity:	PWWP2 B antibody was raised against the N terminal of PWWP2
Purification:	Affinity purified

Target Details

Target:	PWWP2B
Alternative Name:	PWWP2B (PWWP2B Products)
Background:	The function of PWWP2B protein is not widely studied, and is yet to be elucidated fully.
Molecular Weight:	53 kDa (MW of target protein)

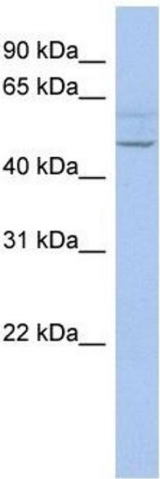
Application Details

Application Notes:	WB: 1 µg/mL Optimal conditions should be determined by the investigator.
Comment:	PWWP2B Blocking Peptide, catalog no. 33R-4054, is also available for use as a blocking control in assays to test for specificity of this PWWP2B antibody
Restrictions:	For Research Use only

Handling

Format:	Lyophilized
Reconstitution:	Lyophilized powder. Add distilled water for a 1 mg/mL concentration of PWWP0 antibody in PBS
Concentration:	Lot specific
Buffer:	PBS
Handling Advice:	Avoid repeated freeze/thaw cycles. Dilute only prior to immediate use.
Storage:	4 °C/-20 °C
Storage Comment:	Store at 2-8 °C for short periods. For longer periods of storage, store at -20 °C.

Images



Western Blotting

Image 1. PWWP2B antibody used at 1 ug/ml to detect target protein.