

Datasheet for ABIN631546
anti-METTL6 antibody (N-Term)



[Go to Product page](#)

1 Image

Overview

Quantity:	100 µL
Target:	METTL6
Binding Specificity:	N-Term
Reactivity:	Human, Mouse, Rat
Host:	Rabbit
Clonality:	Polyclonal
Conjugate:	This METTL6 antibody is un-conjugated
Application:	Western Blotting (WB)

Product Details

Immunogen:	METTL6 antibody was raised using the N terminal of METTL6 corresponding to a region with amino acids QKLEQEAQKNWDLFYKRNSTNFFKDRHWTTREFEELRSCREFEDQKLTML
Specificity:	METTL6 antibody was raised against the N terminal of METTL6
Purification:	Affinity purified

Target Details

Target:	METTL6
Alternative Name:	METTL6 (METTL6 Products)
Background:	METTL6 is a probable methyltransferase.
Molecular Weight:	33 kDa (MW of target protein)

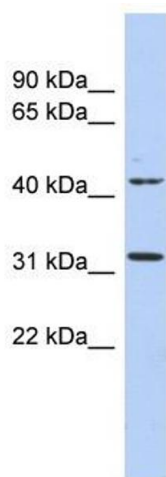
Application Details

Application Notes:	WB: 1 µg/mL Optimal conditions should be determined by the investigator.
Comment:	METTL6 Blocking Peptide, catalog no. 33R-7606, is also available for use as a blocking control in assays to test for specificity of this METTL6 antibody
Restrictions:	For Research Use only

Handling

Format:	Lyophilized
Reconstitution:	Lyophilized powder. Add distilled water for a 1 mg/mL concentration of METTL6 antibody in PBS
Concentration:	Lot specific
Buffer:	PBS
Handling Advice:	Avoid repeated freeze/thaw cycles. Dilute only prior to immediate use.
Storage:	4 °C/-20 °C
Storage Comment:	Store at 2-8 °C for short periods. For longer periods of storage, store at -20 °C.

Images



Western Blotting

Image 1. METTL6 antibody used at 1 ug/ml to detect target protein.