

Datasheet for ABIN631555  
**anti-LOC652618 antibody (N-Term)**



[Go to Product page](#)

1 Image

## Overview

|                      |  |
|----------------------|--|
| Quantity:            | 100 µL                                   |
| Target:              | LOC652618                                |
| Binding Specificity: | N-Term                                   |
| Reactivity:          | Human                                    |
| Host:                | Rabbit                                   |
| Clonality:           | Polyclonal                               |
| Conjugate:           | This LOC652618 antibody is un-conjugated |
| Application:         | Western Blotting (WB)                    |

## Product Details

|               |  |
|---------------|--|
| Immunogen:    | LOC652618 antibody was raised using the N terminal Of Loc652618 corresponding to a region with amino acids MAGRSGHVDVNNERRLKPLYDNLNNGNYKMALQAADKLLKHKDLHCAKV |
| Specificity:  | LOC652618 antibody was raised against the N terminal Of Loc652618  |
| Purification: | Affinity purified  |

## Target Details

|                   |   |
|-------------------|---|
| Target:           | LOC652618   |
| Alternative Name: | LOC652618 ( <a href="#">LOC652618 Products</a> )  |
| Background:       | The function of LOC652618 protein has not been widely studied, and is yet to be fully elucidated. |

## Target Details

---

Molecular Weight: 14 kDa (MW of target protein)

## Application Details

---

Application Notes: WB: 1 µg/mL  
Optimal conditions should be determined by the investigator.

Comment: LOC652618 Blocking Peptide, catalog no. 33R-5668, is also available for use as a blocking control in assays to test for specificity of this LOC652618 antibody

Restrictions: For Research Use only

## Handling

---

Format: Lyophilized

Reconstitution: Lyophilized powder. Add distilled water for a 1 mg/mL concentration of LOC652618 antibody in PBS

Concentration: Lot specific

Buffer: PBS

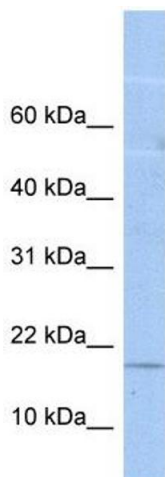
Handling Advice: Avoid repeated freeze/thaw cycles.  
Dilute only prior to immediate use.

Storage: 4 °C/-20 °C

Storage Comment: Store at 2-8 °C for short periods. For longer periods of storage, store at -20 °C.

## Images

---



### Western Blotting

**Image 1.** LOC652618 antibody used at 1 ug/ml to detect target protein.