

Datasheet for ABIN631559
anti-Keratin 24 antibody (Middle Region)



[Go to Product page](#)

1 Image

Overview

Quantity:	100 µL
Target:	Keratin 24 (KRT24)
Binding Specificity:	Middle Region
Reactivity:	Human
Host:	Rabbit
Clonality:	Polyclonal
Conjugate:	This Keratin 24 antibody is un-conjugated
Application:	Western Blotting (WB)

Product Details

Immunogen:	Cytokeratin 24 antibody was raised using the middle region of KRT24 corresponding to a region with amino acids GSVNMGSRDLVSGDSRSGSCGQGRDSSKTRVTKTIVEELVDGKVVSSQV
Specificity:	Cytokeratin 24 antibody was raised against the middle region of KRT24
Purification:	Affinity purified

Target Details

Target:	Keratin 24 (KRT24)
Alternative Name:	Cytokeratin 24 (KRT24 Products)
Background:	KRT24 is a member of the type I (acidic) keratin family, which belongs to the superfamily of intermediate filament (IF) proteins. Keratins are heteropolymeric structural proteins which form the intermediate filament. These filaments, along with actin microfilaments and microtubules,

Target Details

compose the cytoskeleton of epithelial cells. The type I keratin genes are clustered in a region of chromosome 17q12-q21.

Molecular Weight: 55 kDa (MW of target protein)

Application Details

Application Notes: WB: 1 µg/mL
Optimal conditions should be determined by the investigator.

Comment: Cytokeratin 24 Blocking Peptide, catalog no. 33R-3596, is also available for use as a blocking control in assays to test for specificity of this Cytokeratin 24 antibody

Restrictions: For Research Use only

Handling

Format: Lyophilized

Reconstitution: Lyophilized powder. Add distilled water for a 1 mg/mL concentration of KRT24 antibody in PBS

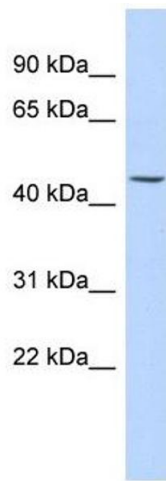
Concentration: Lot specific

Buffer: PBS

Handling Advice: Avoid repeated freeze/thaw cycles.
Dilute only prior to immediate use.

Storage: 4 °C/-20 °C

Storage Comment: Store at 2-8 °C for short periods. For longer periods of storage, store at -20 °C.



Western Blotting

Image 1. Cytokeratin 24 antibody used at 1 ug/ml to detect target protein.