

Datasheet for ABIN631565
anti-ALDH3B1 antibody (N-Term)



[Go to Product page](#)

1 Image

Overview

Quantity:	100 µL
Target:	ALDH3B1
Binding Specificity:	N-Term
Reactivity:	Human
Host:	Rabbit
Clonality:	Polyclonal
Conjugate:	This ALDH3B1 antibody is un-conjugated
Application:	Western Blotting (WB)

Product Details

Immunogen:	ALDH3 B1 antibody was raised using the N terminal of ALDH3 1 corresponding to a region with amino acids DPLGDTLRRLREAFHAGRTRPAEFRAAQLQGLGRFLQENKQLLDALAQD
Specificity:	ALDH3 B1 antibody was raised against the N terminal of ALDH3 1
Purification:	Affinity purified

Target Details

Target:	ALDH3B1
Alternative Name:	ALDH3B1 (ALDH3B1 Products)
Background:	The aldehyde dehydrogenases are a family of isozymes that may play a major role in the detoxification of aldehydes generated by alcohol metabolism and lipid peroxidation. ALDH3B1 is highly expressed in kidney and lung. The aldehyde dehydrogenases are a family of isozymes

Target Details

that may play a major role in the detoxification of aldehydes generated by alcohol metabolism and lipid peroxidation. This particular gene spans about 20 kb of genomic DNA and is composed of 9 coding exons.

Molecular Weight: 52 kDa (MW of target protein)

Pathways: [Monocarboxylic Acid Catabolic Process](#)

Application Details

Application Notes: WB: 1 µg/mL
Optimal conditions should be determined by the investigator.

Comment: ALDH3B1 Blocking Peptide, catalog no. 33R-2105, is also available for use as a blocking control in assays to test for specificity of this ALDH3B1 antibody

Restrictions: For Research Use only

Handling

Format: Lyophilized

Reconstitution: Lyophilized powder. Add distilled water for a 1 mg/mL concentration of ALDH0 1 antibody in PBS

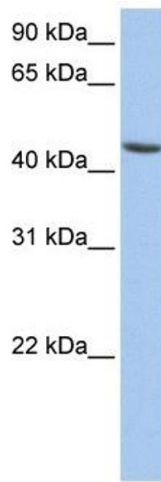
Concentration: Lot specific

Buffer: PBS

Handling Advice: Avoid repeated freeze/thaw cycles.
Dilute only prior to immediate use.

Storage: 4 °C/-20 °C

Storage Comment: Store at 2-8 °C for short periods. For longer periods of storage, store at -20 °C.



Western Blotting

Image 1. ALDH3B1 antibody used at 1 ug/ml to detect target protein.