

Datasheet for ABIN631567
anti-GLO1 antibody (N-Term)



[Go to Product page](#)

1 Image

Overview

Quantity:	100 µL
Target:	GLO1
Binding Specificity:	N-Term
Reactivity:	Human, Mouse, Rat
Host:	Rabbit
Clonality:	Polyclonal
Conjugate:	This GLO1 antibody is un-conjugated
Application:	Western Blotting (WB)

Product Details

Immunogen:	GLO1 antibody was raised using the N terminal of GLO1 corresponding to a region with amino acids TMLRVKDPKKSLEDFYTRVLGMTLIQKCDFPIMKFSLYFLAYEDKNDIPKE
Specificity:	GLO1 antibody was raised against the N terminal of GLO1
Purification:	Affinity purified

Target Details

Target:	GLO1
Alternative Name:	GLO1 (GLO1 Products)
Background:	The enzyme encoded by this gene is responsible for the catalysis and formation of S-lactoyl-glutathione from methylglyoxal condensation and reduced glutathione. Glyoxalase I is linked to HLA and is localized to 6p21.3-p21.1, between HLA and the centromere.

Target Details

Molecular Weight: 21 kDa (MW of target protein)

Application Details

Application Notes: WB: 1 µg/mL
Optimal conditions should be determined by the investigator.

Comment: GLO1 Blocking Peptide, catalog no. 33R-9204, is also available for use as a blocking control in assays to test for specificity of this GLO1 antibody

Restrictions: For Research Use only

Handling

Format: Lyophilized

Reconstitution: Lyophilized powder. Add distilled water for a 1 mg/mL concentration of GLO1 antibody in PBS

Concentration: Lot specific

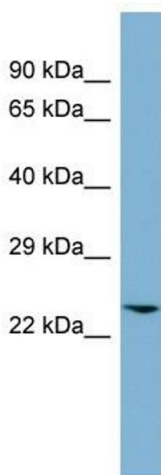
Buffer: PBS

Handling Advice: Avoid repeated freeze/thaw cycles.
Dilute only prior to immediate use.

Storage: 4 °C/-20 °C

Storage Comment: Store at 2-8 °C for short periods. For longer periods of storage, store at -20 °C.

Images



Western Blotting

Image 1. GLO1 antibody used at 1 ug/ml to detect target protein.