

Datasheet for ABIN631580  
**anti-GOPC antibody (N-Term)**



[Go to Product page](#)

1 Image

## Overview

Quantity:	100 µL
Target:	GOPC
Binding Specificity:	N-Term
Reactivity:	Human, Mouse
Host:	Rabbit
Clonality:	Polyclonal
Conjugate:	This GOPC antibody is un-conjugated
Application:	Western Blotting (WB)

## Product Details

Immunogen:	GOPC antibody was raised using the N terminal of GOPC corresponding to a region with amino acids EVLEKEFDKAFVDVLLLLGEIDPDQADITYEGRQKMTSLSSCFAQLCHKA
Specificity:	GOPC antibody was raised against the N terminal of GOPC
Purification:	Affinity purified

## Target Details

Target:	GOPC
Alternative Name:	GOPC ( <a href="#">GOPC Products</a> )
Background:	GOPC plays a role in intracellular protein trafficking and degradation. GOPC may regulate CFTR chloride currents and acid-induced ACCN3 currents by modulating cell surface expression of both channels. GOPC may also regulate the intracellular trafficking of the ADR1B receptor.

## Target Details

---

GOPC may play a role in autophagy.

Molecular Weight: 50 kDa (MW of target protein)

Pathways: [Maintenance of Protein Location, Asymmetric Protein Localization](#)

## Application Details

---

Application Notes: WB: 1 µg/mL  
Optimal conditions should be determined by the investigator.

Comment: GOPC Blocking Peptide, catalog no. 33R-2799, is also available for use as a blocking control in assays to test for specificity of this GOPC antibody

Restrictions: For Research Use only

## Handling

---

Format: Lyophilized

Reconstitution: Lyophilized powder. Add distilled water for a 1 mg/mL concentration of GOPC antibody in PBS

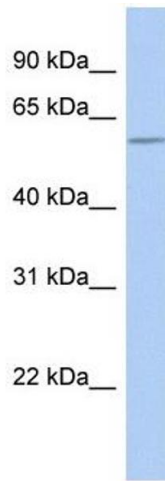
Concentration: Lot specific

Buffer: PBS

Handling Advice: Avoid repeated freeze/thaw cycles.  
Dilute only prior to immediate use.

Storage: 4 °C/-20 °C

Storage Comment: Store at 2-8 °C for short periods. For longer periods of storage, store at -20 °C.



### Western Blotting

**Image 1.** GOPC antibody used at 1 ug/ml to detect target protein.