

Datasheet for ABIN631586  
**anti-ATP6V1A antibody (N-Term)**



[Go to Product page](#)

1 Image

## Overview

Quantity:	100 µL
Target:	ATP6V1A
Binding Specificity:	N-Term
Reactivity:	Human, Mouse, Rat
Host:	Rabbit
Clonality:	Polyclonal
Conjugate:	This ATP6V1A antibody is un-conjugated
Application:	Western Blotting (WB)

## Product Details

Immunogen:	ATP6 V6 antibody was raised using the N terminal of ATP6 6 corresponding to a region with amino acids SGVSVGDPVLRRTGKPLSVELGPGIMGAIFDGIQRPLSDISSQTQSIYIPR
Specificity:	ATP6 V6 antibody was raised against the N terminal of ATP6 6
Purification:	Affinity purified

## Target Details

Target:	ATP6V1A
Alternative Name:	ATP6V1A ( <a href="#">ATP6V1A Products</a> )
Background:	This gene encodes a component of vacuolar ATPase (V-ATPase), a multisubunit enzyme that mediates acidification of eukaryotic intracellular organelles.

## Target Details

Molecular Weight:	68 kDa (MW of target protein)
Pathways:	<a href="#">Transition Metal Ion Homeostasis</a> , <a href="#">Proton Transport</a> , <a href="#">SARS-CoV-2 Protein Interactome</a>

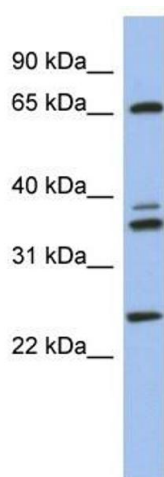
## Application Details

Application Notes:	WB: 1 µg/mL Optimal conditions should be determined by the investigator.
Comment:	ATP6V1A Blocking Peptide, catalog no. 33R-8503, is also available for use as a blocking control in assays to test for specificity of this ATP6V1A antibody
Restrictions:	For Research Use only

## Handling

Format:	Lyophilized
Reconstitution:	Lyophilized powder. Add distilled water for a 1 mg/mL concentration of ATP0 0 antibody in PBS
Concentration:	Lot specific
Buffer:	PBS
Handling Advice:	Avoid repeated freeze/thaw cycles. Dilute only prior to immediate use.
Storage:	4 °C/-20 °C
Storage Comment:	Store at 2-8 °C for short periods. For longer periods of storage, store at -20 °C.

## Images



### Western Blotting

**Image 1.** ATP6V1A antibody used at 1 µg/ml to detect target protein.