

Datasheet for ABIN631595

**anti-Catalase antibody (Middle Region)**[Go to Product page](#)**2** Images**1** Publication

## Overview

Quantity:	100 µL
Target:	Catalase (CAT)
Binding Specificity:	Middle Region
Reactivity:	Human, Mouse, Dog
Host:	Rabbit
Clonality:	Polyclonal
Conjugate:	This Catalase antibody is un-conjugated
Application:	Western Blotting (WB)

## Product Details

Immunogen:	Catalase antibody was raised using the middle region of CAT corresponding to a region with amino acids LKDAQIFIQKKAVKNFTEVHPDYGSHIQALLDKYNAEKPKNAIHTFVQSG
Specificity:	Catalase antibody was raised against the middle region of CAT
Purification:	Affinity purified

## Target Details

Target:	Catalase (CAT)
Alternative Name:	Catalase ( <a href="#">CAT Products</a> )
Background:	This gene encodes catalase, a key antioxidant enzyme in the bodies defense against oxidative stress. Catalase is a heme enzyme that is present in the peroxisome of nearly all aerobic cells.

## Target Details

Molecular Weight:	58 kDa (MW of target protein)
Pathways:	<a href="#">Cellular Glucan Metabolic Process</a> , <a href="#">Cell RedoxHomeostasis</a> , <a href="#">Photoperiodism</a>

## Application Details

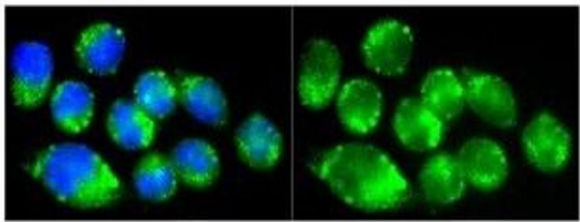
Application Notes:	WB: 1 µg/mL Optimal conditions should be determined by the investigator.
Comment:	Catalase Blocking Peptide, catalog no. 33R-5077, is also available for use as a blocking control in assays to test for specificity of this Catalase antibody
Restrictions:	For Research Use only

## Handling

Format:	Lyophilized
Reconstitution:	Lyophilized powder. Add distilled water for a 1 mg/mL concentration of CAT antibody in PBS
Concentration:	Lot specific
Buffer:	PBS
Handling Advice:	Avoid repeated freeze/thaw cycles. Dilute only prior to immediate use.
Storage:	4 °C/-20 °C
Storage Comment:	Store at 2-8 °C for short periods. For longer periods of storage, store at -20 °C.

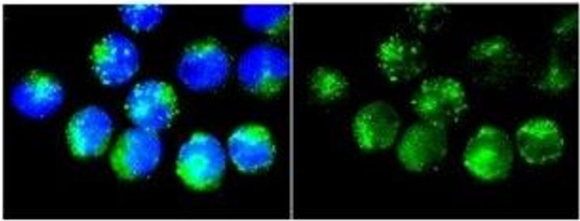
## Publications

Product cited in:	Makkar, Contreras, Paintlia, Smith, Haq, Singh: "Molecular organization of peroxisomal enzymes: protein-protein interactions in the membrane and in the matrix." in: <b>Archives of biochemistry and biophysics</b> , Vol. 451, Issue 2, pp. 128-40, (2006) ( <a href="#">PubMed</a> ).
-------------------	---



Immunofluorescence

**Image 1.** Catalase antibody used at a dilution of 1:100 to detect mouse macrophages.



Western Blotting

**Image 2.** Catalase antibody used at 1 ug/ml to detect target protein.