

Datasheet for ABIN631598  
**anti-ARPC2 antibody (N-Term)**



[Go to Product page](#)

1 Image

## Overview

Quantity:	100 µL
Target:	ARPC2
Binding Specificity:	N-Term
Reactivity:	Human, Mouse, Rat
Host:	Rabbit
Clonality:	Polyclonal
Conjugate:	This ARPC2 antibody is un-conjugated
Application:	Western Blotting (WB)

## Product Details

Immunogen:	ARPC2 antibody was raised using the N terminal of ARPC2 corresponding to a region with amino acids MVLNVYCCFFQISDIQTMKINQILKEFILVGFVYPHVQTFLFVFFCL
Specificity:	ARPC2 antibody was raised against the N terminal of ARPC2
Purification:	Affinity purified

## Target Details

Target:	ARPC2
Alternative Name:	ARPC2 ( <a href="#">ARPC2 Products</a> )
Background:	ARPC2 is one of seven subunits of the human Arp2/3 protein complex. The Arp2/3 protein complex has been implicated in the control of actin polymerization in cells and has been conserved through evolution. The exact role of ARPC2, the p34 subunit, has yet to be

## Target Details

---

determined.

Molecular Weight: 33 kDa (MW of target protein)

Pathways: [RTK Signaling, Regulation of Actin Filament Polymerization](#)

## Application Details

---

Application Notes: WB: 1 µg/mL  
Optimal conditions should be determined by the investigator.

Comment: ARPC2 Blocking Peptide, catalog no. 33R-6593, is also available for use as a blocking control in assays to test for specificity of this ARPC2 antibody

Restrictions: For Research Use only

## Handling

---

Format: Lyophilized

Reconstitution: Lyophilized powder. Add distilled water for a 1 mg/mL concentration of ARPC2 antibody in PBS

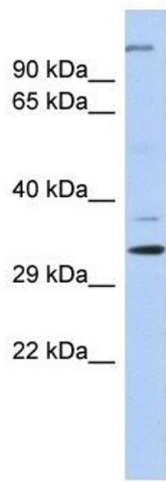
Concentration: Lot specific

Buffer: PBS

Handling Advice: Avoid repeated freeze/thaw cycles.  
Dilute only prior to immediate use.

Storage: 4 °C/-20 °C

Storage Comment: Store at 2-8 °C for short periods. For longer periods of storage, store at -20 °C.



### Western Blotting

**Image 1.** ARPC2 antibody used at 1 ug/ml to detect target protein.