

Datasheet for ABIN631600
anti-SPATA22 antibody (N-Term)



[Go to Product page](#)

1 Image

Overview

Quantity:	100 µL
Target:	SPATA22
Binding Specificity:	N-Term
Reactivity:	Human, Mouse, Rat
Host:	Rabbit
Clonality:	Polyclonal
Conjugate:	This SPATA22 antibody is un-conjugated
Application:	Western Blotting (WB)

Product Details

Immunogen:	SPATA22 antibody was raised using the N terminal of SPATA22 corresponding to a region with amino acids MKRSLSENSARSTAGCLPVPLFNQKRNRPQLTSNPLKDDSGISTPSDNY
Specificity:	SPATA22 antibody was raised against the N terminal of SPATA22
Purification:	Affinity purified

Target Details

Target:	SPATA22
Alternative Name:	SPATA22 (SPATA22 Products)
Background:	SPATA22 is highly expressed in adult testis. The specific function of SPATA22 is not yet known.
Molecular Weight:	40 kDa (MW of target protein)

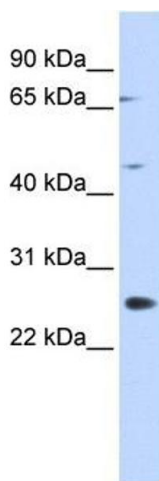
Application Details

Application Notes:	WB: 1 µg/mL Optimal conditions should be determined by the investigator.
Comment:	SPATA22 Blocking Peptide, catalog no. 33R-6163, is also available for use as a blocking control in assays to test for specificity of this SPATA22 antibody
Restrictions:	For Research Use only

Handling

Format:	Lyophilized
Reconstitution:	Lyophilized powder. Add distilled water for a 1 mg/mL concentration of SPATA22 antibody in PBS
Concentration:	Lot specific
Buffer:	PBS
Handling Advice:	Avoid repeated freeze/thaw cycles. Dilute only prior to immediate use.
Storage:	4 °C/-20 °C
Storage Comment:	Store at 2-8 °C for short periods. For longer periods of storage, store at -20 °C.

Images



Western Blotting

Image 1. SPATA22 antibody used at 1 ug/ml to detect target protein.