

Datasheet for ABIN631602
anti-alpha KGDHC antibody (N-Term)



[Go to Product page](#)

1 Image

Overview

Quantity:	100 µL
Target:	alpha KGDHC (alphaKGDHC)
Binding Specificity:	N-Term
Reactivity:	Human
Host:	Rabbit
Clonality:	Polyclonal
Conjugate:	This alpha KGDHC antibody is un-conjugated
Application:	Western Blotting (WB)

Product Details

Immunogen:	OGDH antibody was raised using the N terminal of OGDH corresponding to a region with amino acids MFHLRTCAAKLRPLTASQTVKTF SQNRPAARTFQQIRCYSAPVAAEPFL
Specificity:	OGDH antibody was raised against the N terminal of OGDH
Purification:	Affinity purified

Target Details

Target:	alpha KGDHC (alphaKGDHC)
Alternative Name:	OGDH (alphaKGDHC Products)
Background:	The 2-oxoglutarate dehydrogenase complex catalyzes the overall conversion of 2-oxoglutarate to succinyl-CoA and CO ₂ . It contains multiple copies of three enzymatic components: 2-oxoglutarate dehydrogenase (E1), dihydrolipoamide succinyltransferase (E2) and lipoamide

Target Details

dehydrogenase (E3).

Molecular Weight: 47 kDa (MW of target protein)

Application Details

Application Notes: WB: 1 µg/mL

Optimal conditions should be determined by the investigator.

Comment: OGDH Blocking Peptide, catalog no. 33R-5994, is also available for use as a blocking control in assays to test for specificity of this OGDH antibody

Restrictions: For Research Use only

Handling

Format: Lyophilized

Reconstitution: Lyophilized powder. Add distilled water for a 1 mg/mL concentration of OGDH antibody in PBS

Concentration: Lot specific

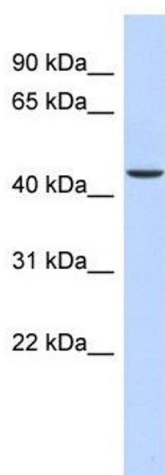
Buffer: PBS

Handling Advice: Avoid repeated freeze/thaw cycles.
Dilute only prior to immediate use.

Storage: 4 °C/-20 °C

Storage Comment: Store at 2-8 °C for short periods. For longer periods of storage, store at -20 °C.

Images



Western Blotting

Image 1. OGDH antibody used at 1 µg/ml to detect target protein.