

Datasheet for ABIN631607  
**anti-GAPDHS antibody (N-Term)**



[Go to Product page](#)

1 Image

## Overview

Quantity:	100 µL
Target:	GAPDHS
Binding Specificity:	N-Term
Reactivity:	Human
Host:	Rabbit
Clonality:	Polyclonal
Conjugate:	This GAPDHS antibody is un-conjugated
Application:	Western Blotting (WB)

## Product Details

Immunogen:	GAPDHS antibody was raised using the N terminal of GAPDHS corresponding to a region with amino acids PFIDPEYMVYMFKYDSTHGRYKGSVEFRNGQLVVDNHEISVYQCKEPKQI
Specificity:	GAPDHS antibody was raised against the N terminal of GAPDHS
Purification:	Affinity purified

## Target Details

Target:	GAPDHS
Alternative Name:	GAPDHS ( <a href="#">GAPDHS Products</a> )
Background:	GAPDHS is a protein belonging to the glyceraldehyde-3-phosphate dehydrogenase family of enzymes that play an important role in carbohydrate metabolism.

## Target Details

---

Molecular Weight:	44 kDa (MW of target protein)
Pathways:	<a href="#">Regulation of Carbohydrate Metabolic Process</a>

## Application Details

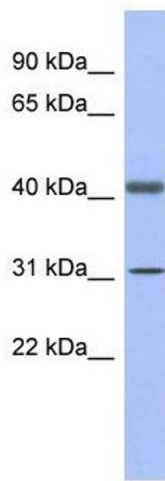
---

Application Notes:	WB: 1 µg/mL Optimal conditions should be determined by the investigator.
Comment:	GAPDHS Blocking Peptide, catalog no. 33R-7075, is also available for use as a blocking control in assays to test for specificity of this GAPDHS antibody
Restrictions:	For Research Use only

## Handling

---

Format:	Lyophilized
Reconstitution:	Lyophilized powder. Add distilled water for a 1 mg/mL concentration of GAPDHS antibody in PBS
Concentration:	Lot specific
Buffer:	PBS
Handling Advice:	Avoid repeated freeze/thaw cycles. Dilute only prior to immediate use.
Storage:	4 °C/-20 °C
Storage Comment:	Store at 2-8 °C for short periods. For longer periods of storage, store at -20 °C.



### Western Blotting

**Image 1.** GAPDHS antibody used at 1 ug/ml to detect target protein.