

Datasheet for ABIN631621 **anti-MAB21L1 antibody**



[Go to Product page](#)

1 Image

Overview

Quantity:	100 µL
Target:	MAB21L1
Reactivity:	Human, Mouse, Rat
Host:	Rabbit
Clonality:	Polyclonal
Conjugate:	This MAB21L1 antibody is un-conjugated
Application:	Western Blotting (WB)

Product Details

Immunogen:	MAB21 L1 antibody was raised using a synthetic peptide corresponding to a region with amino acids IAAQAKLVYHLNKYYNEKCQARKAAIAKTIREVCKVSDVLKEVEVQEPR
Purification:	Affinity purified

Target Details

Target:	MAB21L1
Alternative Name:	MAB21L1 (MAB21L1 Products)
Background:	This gene is similar to the MAB-21 cell fate-determining gene found in <i>C. elegans</i> . It may be involved in eye and cerebellum development, and it has been proposed that expansion of a trinucleotide repeat region in the 5' UTR may play a role in a variety of psychiatric disorders.
Molecular Weight:	41 kDa (MW of target protein)

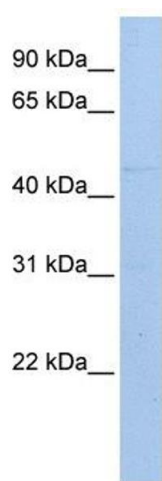
Application Details

Application Notes:	WB: 1 µg/mL Optimal conditions should be determined by the investigator.
Comment:	MAB21L1 Blocking Peptide, catalog no. 33R-3887, is also available for use as a blocking control in assays to test for specificity of this MAB21L1 antibody
Restrictions:	For Research Use only

Handling

Format:	Lyophilized
Reconstitution:	Lyophilized powder. Add distilled water for a 1 mg/mL concentration of MAB20 1 antibody in PBS
Concentration:	Lot specific
Buffer:	PBS
Handling Advice:	Avoid repeated freeze/thaw cycles.
Storage:	4 °C/-20 °C
Storage Comment:	Store at 2-8 °C for short periods. For longer periods of storage, store at -20 °C.

Images



Western Blotting

Image 1. MAB21L1 antibody used at 1 ug/ml to detect target protein.