

Datasheet for ABIN631644  
**anti-SELENBP1 antibody (C-Term)**



[Go to Product page](#)

1 Image

## Overview

Quantity:	100 µL
Target:	SELENBP1
Binding Specificity:	C-Term
Reactivity:	Human, Mouse, Rat
Host:	Rabbit
Clonality:	Polyclonal
Conjugate:	This SELENBP1 antibody is un-conjugated
Application:	Western Blotting (WB)

## Product Details

Immunogen:	SELENBP1 antibody was raised using the C terminal of SELENBP1 corresponding to a region with amino acids KQFYPDLIREGSVMLQVDVDTVKGGLKLNPNFLVDFGKEPLGPALAHCLR
Specificity:	SELENBP1 antibody was raised against the C terminal of SELENBP1
Purification:	Affinity purified

## Target Details

Target:	SELENBP1
Alternative Name:	SELENBP1 ( <a href="#">SELENBP1 Products</a> )
Background:	SELENBP1 belongs to the selenium-binding protein family. Selenium is an essential nutrient that exhibits potent anticarcinogenic properties, and deficiency of selenium may cause certain neurologic diseases. It has been proposed that the effects of selenium in preventing cancer and

## Target Details

---

neurologic diseases may be mediated by selenium-binding proteins.

Molecular Weight: 44 kDa (MW of target protein)

Pathways: [Brown Fat Cell Differentiation](#)

## Application Details

---

Application Notes: WB: 1 µg/mL  
Optimal conditions should be determined by the investigator.

Comment: SELENBP1 Blocking Peptide, catalog no. 33R-4604, is also available for use as a blocking control in assays to test for specificity of this SELENBP1 antibody

Restrictions: For Research Use only

## Handling

---

Format: Lyophilized

Reconstitution: Lyophilized powder. Add distilled water for a 1 mg/mL concentration of SELENBP1 antibody in PBS

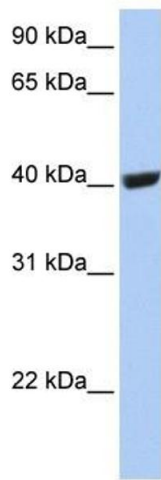
Concentration: Lot specific

Buffer: PBS

Handling Advice: Avoid repeated freeze/thaw cycles.  
Dilute only prior to immediate use.

Storage: 4 °C/-20 °C

Storage Comment: Store at 2-8 °C for short periods. For longer periods of storage, store at -20 °C.



### Western Blotting

**Image 1.** SELENBP1 antibody used at 1 ug/ml to detect target protein.