

## Datasheet for ABIN631653 **anti-NKD1 antibody**

### 3 Images



[Go to Product page](#)

### Overview

Quantity:	100 µL
Target:	NKD1
Reactivity:	Human
Host:	Rabbit
Clonality:	Polyclonal
Conjugate:	This NKD1 antibody is un-conjugated
Application:	Western Blotting (WB), Immunohistochemistry (IHC)

### Product Details

Immunogen:	NKD1 antibody was raised using a synthetic peptide corresponding to a region with amino acids ELVGDVLRDRTLSEEEEDDFRLEVALPPEKTDGLGSGDEKKMERVSEPCPG
Purification:	Affinity purified

### Target Details

Target:	NKD1
Alternative Name:	NKD1 ( <a href="#">NKD1 Products</a> )
Background:	In the mouse, NkDa is a Dishevelled -binding protein that functions as a negative regulator of the Wnt-beta-catenin -Tcf signaling pathway.
Molecular Weight:	52 kDa (MW of target protein)

## Application Details

Application Notes:	WB: 1 µg/mL, IHC: 4-8 µg/mL Optimal conditions should be determined by the investigator.
Comment:	NKD1 Blocking Peptide, catalog no. 33R-2577, is also available for use as a blocking control in assays to test for specificity of this NKD1 antibody
Restrictions:	For Research Use only

## Handling

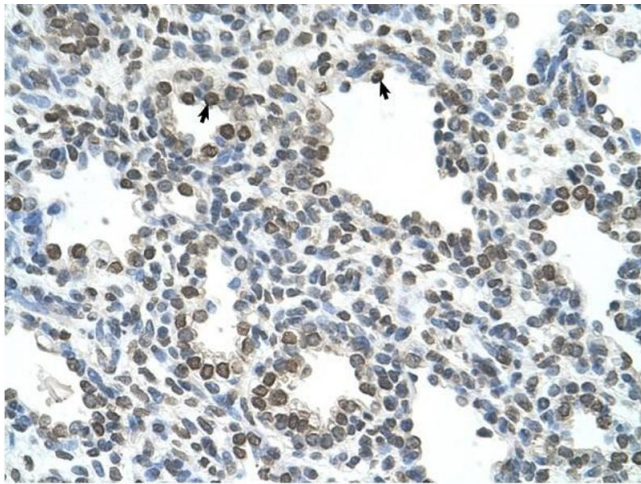
Format:	Lyophilized
Reconstitution:	Lyophilized powder. Add distilled water for a 1 mg/mL concentration of NKD1 antibody in PBS
Concentration:	Lot specific
Buffer:	PBS
Handling Advice:	Avoid repeated freeze/thaw cycles.
Storage:	4 °C/-20 °C
Storage Comment:	Store at 2-8 °C for short periods. For longer periods of storage, store at -20 °C.

## Images



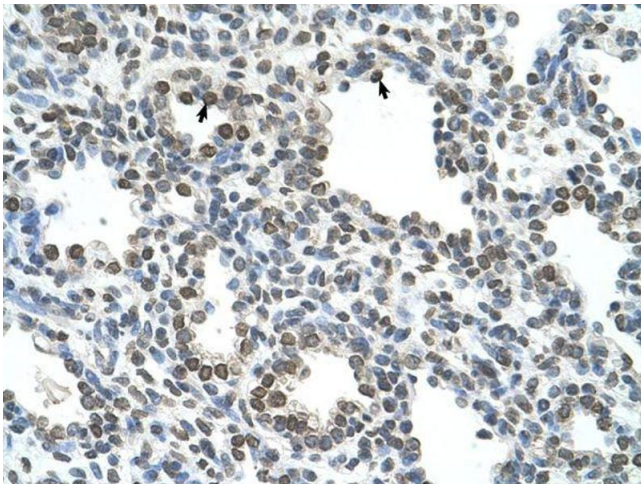
### Western Blotting

**Image 1.** NKD1 antibody used at 1 µg/ml to detect target protein.



#### Immunohistochemistry

**Image 2.** NKD1 antibody was used for immunohistochemistry at a concentration of 4-8 ug/ml to stain Alveolar cells (arrows) in Human Lung. Magnification is at 400X



#### Immunohistochemistry

**Image 3.** NKD1 antibody was used for immunohistochemistry at a concentration of 4-8 ug/ml. Magnification is at 400X