

Datasheet for ABIN631658 **anti-UBE2L3 antibody (C-Term)**



[Go to Product page](#)

1 Image

Overview

Quantity:	100 µL
Target:	UBE2L3
Binding Specificity:	C-Term
Reactivity:	Human, Mouse, Rat, Dog
Host:	Rabbit
Clonality:	Polyclonal
Conjugate:	This UBE2L3 antibody is un-conjugated
Application:	Western Blotting (WB)

Product Details

Immunogen:	UBE2 L3 antibody was raised using the C terminal of UBE2 3 corresponding to a region with amino acids IQSLIALVNDPQPEHPLRADLAEYYSKDRKKFCKNAEFTKKYGEKRPVD
Specificity:	UBE2 L3 antibody was raised against the C terminal of UBE2 3
Purification:	Affinity purified

Target Details

Target:	UBE2L3
Alternative Name:	UBE2L3 (UBE2L3 Products)
Background:	UBE2L3(ubiquitin-conjugating enzyme E2L 3) Antibody The modification of proteins with ubiquitin is an important cellular mechanism for targeting abnormal or short-lived proteins for degradation. Ubiquitination involves at least three classes of enzymes: ubiquitin-activating

Target Details

enzymes (E1s), ubiquitin-conjugating enzymes (E2s) and ubiquitin-protein ligases (E3s).

Molecular Weight: 17 kDa (MW of target protein)

Application Details

Application Notes: WB: 0.25 µg/mL
Optimal conditions should be determined by the investigator.

Comment: UBE2L3 Blocking Peptide, catalog no. 33R-4124, is also available for use as a blocking control in assays to test for specificity of this UBE2L3 antibody

Restrictions: For Research Use only

Handling

Format: Lyophilized

Reconstitution: Lyophilized powder. Add distilled water for a 1 mg/mL concentration of UBE0 3 antibody in PBS

Concentration: Lot specific

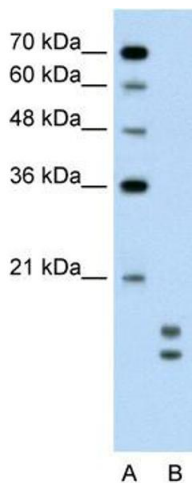
Buffer: PBS

Handling Advice: Avoid repeated freeze/thaw cycles.
Dilute only prior to immediate use.

Storage: 4 °C/-20 °C

Storage Comment: Store at 2-8 °C for short periods. For longer periods of storage, store at -20 °C.

Images



Western Blotting

Image 1. UBE2L3 antibody used at 0.25 ug/ml to detect target protein.