

Datasheet for ABIN631662
anti-UBE2E1 antibody



[Go to Product page](#)

1 Image

Overview

Quantity:	100 µL
Target:	UBE2E1
Reactivity:	Human, Mouse, Drosophila melanogaster
Host:	Rabbit
Clonality:	Polyclonal
Conjugate:	This UBE2E1 antibody is un-conjugated
Application:	Western Blotting (WB)

Product Details

Immunogen:	UBE2 E1 antibody was raised using a synthetic peptide corresponding to a region with amino acids PKGDNIYEWIRSTILGPPGSVYEGGVFFLDITFTPEYPFKPPKVTFRTRIIY
Purification:	Affinity purified

Target Details

Target:	UBE2E1
Alternative Name:	UBE2E1 (UBE2E1 Products)
Background:	UBE2E1 catalyzes the covalent attachment of ubiquitin to other proteins. UBE2E1 mediates the selective degradation of short-lived and abnormal proteins.
Molecular Weight:	21 kDa (MW of target protein)
Pathways:	Ubiquitin Proteasome Pathway

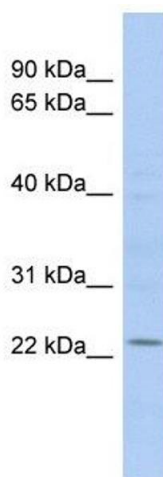
Application Details

Application Notes:	WB: 1 µg/mL Optimal conditions should be determined by the investigator.
Comment:	UBE2E1 Blocking Peptide, catalog no. 33R-7168, is also available for use as a blocking control in assays to test for specificity of this UBE2E1 antibody
Restrictions:	For Research Use only

Handling

Format:	Lyophilized
Reconstitution:	Lyophilized powder. Add distilled water for a 1 mg/mL concentration of UBE0 1 antibody in PBS
Concentration:	Lot specific
Buffer:	PBS
Handling Advice:	Avoid repeated freeze/thaw cycles.
Storage:	4 °C/-20 °C
Storage Comment:	Store at 2-8 °C for short periods. For longer periods of storage, store at -20 °C.

Images



Western Blotting

Image 1. UBE2E1 antibody used at 1 ug/ml to detect target protein.