

Datasheet for ABIN631664 **anti-FBXL2 antibody (N-Term)**



[Go to Product page](#)

1 Image

Overview

Quantity:	100 µL
Target:	FBXL2
Binding Specificity:	N-Term
Reactivity:	Human, Mouse, Rat
Host:	Rabbit
Clonality:	Polyclonal
Conjugate:	This FBXL2 antibody is un-conjugated
Application:	Western Blotting (WB)

Product Details

Immunogen:	FBXL2 antibody was raised using the N terminal of FBXL2 corresponding to a region with amino acids NISKRCGGFLRKLSLRGCGVGDSSLKTFQAQNCRNIEHLNLANGCTKITDS
Specificity:	FBXL2 antibody was raised against the N terminal of FBXL2
Purification:	Affinity purified

Target Details

Target:	FBXL2
Alternative Name:	FBXL2 (FBXL2 Products)
Background:	FBXL2 is a member of the F-box protein family which is characterized by an approximately 40 amino acid motif, the F-box. The F-box proteins constitute one of the four subunits of ubiquitin protein ligase complex called SCFs (SKP1-cullin-F-box), which function in phosphorylation-

Target Details

dependent ubiquitination. The F-box proteins are divided into 3 classes: Fbws containing WD-40 domains, Fbls containing leucine-rich repeats, and Fbxs containing either different protein-protein interaction modules or no recognizable motifs. FBXL2 belongs to the Fbls class and, in addition to an F-box, contains 12 tandem leucine-rich repeats.

Molecular Weight: 47 kDa (MW of target protein)

Application Details

Application Notes: WB: 1 µg/mL
Optimal conditions should be determined by the investigator.

Comment: FBXL2 Blocking Peptide, catalog no. 33R-6734, is also available for use as a blocking control in assays to test for specificity of this FBXL2 antibody

Restrictions: For Research Use only

Handling

Format: Lyophilized

Reconstitution: Lyophilized powder. Add distilled water for a 1 mg/mL concentration of FBXL2 antibody in PBS

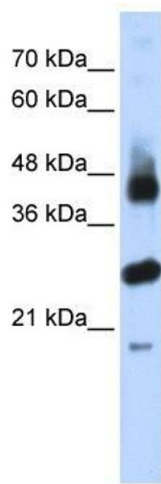
Concentration: Lot specific

Buffer: PBS

Handling Advice: Avoid repeated freeze/thaw cycles.
Dilute only prior to immediate use.

Storage: 4 °C/-20 °C

Storage Comment: Store at 2-8 °C for short periods. For longer periods of storage, store at -20 °C.



Western Blotting

Image 1. FBXL2 antibody used at 1 ug/ml to detect target protein.