

Datasheet for ABIN631665 **anti-G2E3 antibody (N-Term)**



[Go to Product page](#)

1 Image

Overview

Quantity:	100 µL
Target:	G2E3
Binding Specificity:	N-Term
Reactivity:	Human, Mouse, Rat
Host:	Rabbit
Clonality:	Polyclonal
Conjugate:	This G2E3 antibody is un-conjugated
Application:	Western Blotting (WB)

Product Details

Immunogen:	KIAA1333 antibody was raised using the N terminal of KIAA1333 corresponding to a region with amino acids IWQRGKEEEGVYGLIEDIRKEVNRASKLKCCVCKKNGASIGCVAPRCKR
Specificity:	KIAA1333 antibody was raised against the N terminal of KIAA1333
Purification:	Affinity purified

Target Details

Target:	G2E3
Alternative Name:	KIAA1333 (G2E3 Products)
Background:	KIAA1333 is a probable E3 ubiquitin-protein ligase which accepts ubiquitin from an E2 ubiquitin-conjugating enzyme in the form of a thioester and then directly transfers the ubiquitin to targeted substrates.

Target Details

Molecular Weight: 80 kDa (MW of target protein)

Application Details

Application Notes: WB: 0.5 µg/mL
Optimal conditions should be determined by the investigator.

Comment: KIAA1333 Blocking Peptide, catalog no. 33R-4215, is also available for use as a blocking control in assays to test for specificity of this KIAA1333 antibody

Restrictions: For Research Use only

Handling

Format: Lyophilized

Reconstitution: Lyophilized powder. Add distilled water for a 1 mg/mL concentration of KIAA1333 antibody in PBS

Concentration: Lot specific

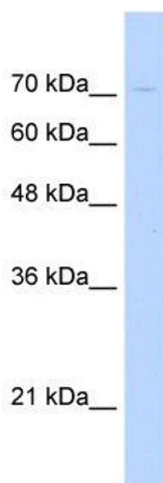
Buffer: PBS

Handling Advice: Avoid repeated freeze/thaw cycles.
Dilute only prior to immediate use.

Storage: 4 °C/-20 °C

Storage Comment: Store at 2-8 °C for short periods. For longer periods of storage, store at -20 °C.

Images



Western Blotting

Image 1. KIAA1333 antibody used at 0.5 ug/ml to detect target protein.