

Datasheet for ABIN631708 **anti-WDR35 antibody (N-Term)**



[Go to Product page](#)

1 Image

Overview

Quantity:	100 µL
Target:	WDR35
Binding Specificity:	N-Term
Reactivity:	Human
Host:	Rabbit
Clonality:	Polyclonal
Conjugate:	This WDR35 antibody is un-conjugated
Application:	Western Blotting (WB)

Product Details

Immunogen:	WDR35 antibody was raised using the N terminal of WDR35 corresponding to a region with amino acids SGSVQVVTWNEQYQKLTTSDENGLIIVWMLYKGSWIEEMINNRNKSVVRS
Specificity:	WDR35 antibody was raised against the N terminal of WDR35
Purification:	Affinity purified

Target Details

Target:	WDR35
Alternative Name:	WDR35 (WDR35 Products)
Background:	This gene encodes a member of the WD repeat protein family. WD repeats are minimally conserved regions of approximately 40 amino acids typically bracketed by gly-his and trp-asp (GH-WD), which may facilitate formation of heterotrimeric or multiprotein complexes. Members

Target Details

of this family are involved in a variety of cellular processes, including cell cycle progression, signal transduction, apoptosis, and gene regulation. Multiple alternatively spliced transcript variants encoding distinct isoforms have been found for this gene, but the biological validity of some variants has not been determined.

Molecular Weight: 132 kDa (MW of target protein)

Pathways: [Hedgehog Signaling](#)

Application Details

Application Notes: WB: 1 µg/mL
Optimal conditions should be determined by the investigator.

Comment: WDR35 Blocking Peptide, catalog no. 33R-8495, is also available for use as a blocking control in assays to test for specificity of this WDR35 antibody

Restrictions: For Research Use only

Handling

Format: Lyophilized

Reconstitution: Lyophilized powder. Add distilled water for a 1 mg/mL concentration of WDR35 antibody in PBS

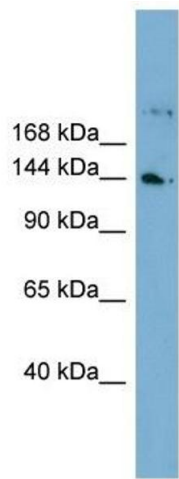
Concentration: Lot specific

Buffer: PBS

Handling Advice: Avoid repeated freeze/thaw cycles.
Dilute only prior to immediate use.

Storage: 4 °C/-20 °C

Storage Comment: Store at 2-8 °C for short periods. For longer periods of storage, store at -20 °C.



Western Blotting

Image 1. WDR35 antibody used at 1 ug/ml to detect target protein.