

Datasheet for ABIN631712  
**anti-NET1 antibody (N-Term)**



[Go to Product page](#)

1 Image

## Overview

Quantity:	100 µL
Target:	NET1
Binding Specificity:	N-Term
Reactivity:	Human
Host:	Rabbit
Clonality:	Polyclonal
Conjugate:	This NET1 antibody is un-conjugated
Application:	Western Blotting (WB)

## Product Details

Immunogen:	NET1 antibody was raised using the N terminal of NET1 corresponding to a region with amino acids RGDHRSPASAQKFSSRSTVPTPAKRRSSALWSEMLDITMKESLTTREIRR
Specificity:	NET1 antibody was raised against the N terminal of NET1
Purification:	Affinity purified

## Target Details

Target:	NET1
Alternative Name:	NET1 ( <a href="#">NET1 Products</a> )
Background:	NET1 acts as guanine nucleotide exchange factor (GEF) for RhoA GTPase. It may be involved in activation of the SAPK/JNK pathway.

## Target Details

Molecular Weight: 62 kDa (MW of target protein)

Pathways: [Neurotrophin Signaling Pathway](#)

## Application Details

Application Notes: WB: 1 µg/mL

Optimal conditions should be determined by the investigator.

Comment: NET1 Blocking Peptide, catalog no. 33R-7919, is also available for use as a blocking control in assays to test for specificity of this NET1 antibody

Restrictions: For Research Use only

## Handling

Format: Lyophilized

Reconstitution: Lyophilized powder. Add distilled water for a 1 mg/mL concentration of NET1 antibody in PBS

Concentration: Lot specific

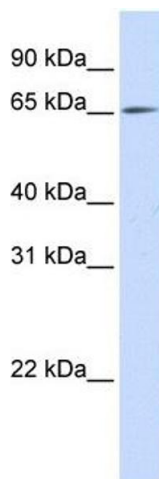
Buffer: PBS

Handling Advice: Avoid repeated freeze/thaw cycles.  
Dilute only prior to immediate use.

Storage: 4 °C/-20 °C

Storage Comment: Store at 2-8 °C for short periods. For longer periods of storage, store at -20 °C.

## Images



### Western Blotting

**Image 1.** NET1 antibody used at 1 µg/ml to detect target protein.