

Datasheet for ABIN631715

anti-HP1BP3 antibody (Middle Region)



[Go to Product page](#)

1 Image

Overview

| | |
|----------------------|---------------------------------------|
| Quantity: | 100 µL |
| Target: | HP1BP3 |
| Binding Specificity: | Middle Region |
| Reactivity: | Human, Mouse, Rat |
| Host: | Rabbit |
| Clonality: | Polyclonal |
| Conjugate: | This HP1BP3 antibody is un-conjugated |
| Application: | Western Blotting (WB) |

Product Details

| | |
|---------------|--|
| Immunogen: | HP1 BP3 antibody was raised using the middle region of HP1 P3 corresponding to a region with amino acids QYYPKLRVDIRPQLLNALQRAVERGQLEQITGKGASGTFQLKKSGEKPL |
| Specificity: | HP1 BP3 antibody was raised against the middle region of HP1 P3 |
| Purification: | Affinity purified |

Target Details

| | |
|-------------------|--|
| Target: | HP1BP3 |
| Alternative Name: | HP1BP3 (HP1BP3 Products) |
| Background: | HP1BP3 is the component of heterochromatin, may be involved in chromatin structure and function. |

Target Details

Molecular Weight: 61 kDa (MW of target protein)

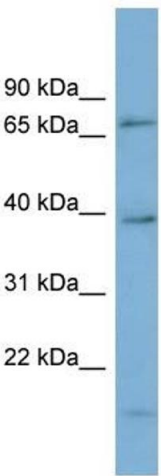
Application Details

| | |
|--------------------|--|
| Application Notes: | WB: 1 µg/mL Optimal conditions should be determined by the investigator. |
| Comment: | HP1BP3 Blocking Peptide, catalog no. 33R-7796, is also available for use as a blocking control in assays to test for specificity of this HP1BP3 antibody |
| Restrictions: | For Research Use only |

Handling

| | |
|------------------|---|
| Format: | Lyophilized |
| Reconstitution: | Lyophilized powder. Add distilled water for a 1 mg/mL concentration of HP0 P3 antibody in PBS |
| Concentration: | Lot specific |
| Buffer: | PBS |
| Handling Advice: | Avoid repeated freeze/thaw cycles. Dilute only prior to immediate use. |
| Storage: | 4 °C/-20 °C |
| Storage Comment: | Store at 2-8 °C for short periods. For longer periods of storage, store at -20 °C. |

Images



Western Blotting

Image 1. HP1BP3 antibody used at 1 ug/ml to detect target protein.