

Datasheet for ABIN631730
anti-FCH01 antibody (Middle Region)



[Go to Product page](#)

2 Images

Overview

Quantity:	100 µL
Target:	FCH01
Binding Specificity:	Middle Region
Reactivity:	Human, Mouse, Rat
Host:	Rabbit
Clonality:	Polyclonal
Conjugate:	This FCH01 antibody is un-conjugated
Application:	Western Blotting (WB)

Product Details

Immunogen:	FCH01 antibody was raised using the middle region of FCH01 corresponding to a region with amino acids SPENVEDSGLDSPSHAAPGSPDSWVPRPGTQPSPSCRAPPPEARIRA
Specificity:	FCH01 antibody was raised against the middle region of FCH01
Purification:	Affinity purified

Target Details

Target:	FCH01
Alternative Name:	FCH01 (FCH01 Products)
Background:	FCH01 is involved in clathrin-coated vesicle formation.
Molecular Weight:	97 kDa (MW of target protein)

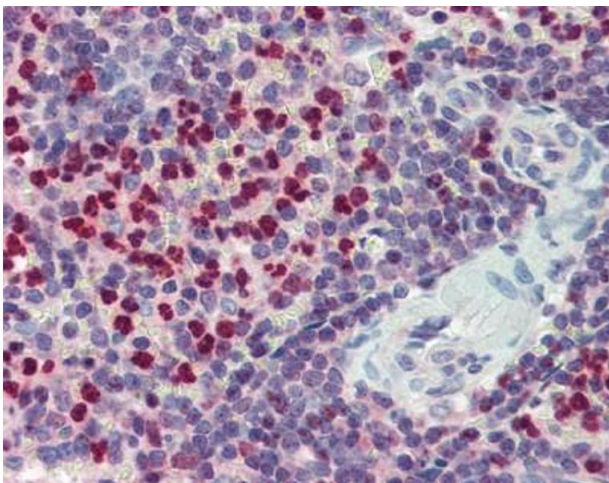
Application Details

Application Notes:	WB: 1 µg/mL Optimal conditions should be determined by the investigator.
Comment:	FCH01 Blocking Peptide, catalog no. 33R-8671, is also available for use as a blocking control in assays to test for specificity of this FCH01 antibody
Restrictions:	For Research Use only

Handling

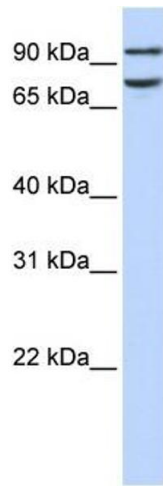
Format:	Lyophilized
Reconstitution:	Lyophilized powder. Add distilled water for a 1 mg/mL concentration of FCH01 antibody in PBS
Concentration:	Lot specific
Buffer:	PBS
Handling Advice:	Avoid repeated freeze/thaw cycles. Dilute only prior to immediate use.
Storage:	4 °C/-20 °C
Storage Comment:	Store at 2-8 °C for short periods. For longer periods of storage, store at -20 °C.

Images



Immunohistochemistry

Image 1. FCH01 antibody was used for immunohistochemistry at a concentration of 4-8 µg/ml. Magnification is at 400X



Western Blotting

Image 2. FCH01 antibody used at 1 ug/ml to detect target protein.