

Datasheet for ABIN631747 **anti-SAE1 antibody (N-Term)**



[Go to Product page](#)

1 Image

Overview

Quantity:	100 µL
Target:	SAE1
Binding Specificity:	N-Term
Reactivity:	Human
Host:	Rabbit
Clonality:	Polyclonal
Conjugate:	This SAE1 antibody is un-conjugated
Application:	Western Blotting (WB)

Product Details

Immunogen:	SAE1 antibody was raised using the N terminal of SAE1 corresponding to a region with amino acids MVEKEEAGGGISEEEAAQYDRQIRLWGLEAQKRLRASRVLLVGLKGLGAE
Specificity:	SAE1 antibody was raised against the N terminal of SAE1
Purification:	Affinity purified

Target Details

Target:	SAE1
Alternative Name:	SAE1 (SAE1 Products)
Background:	Posttranslational modification of proteins by the addition of the small protein SUMO, or sumoylation, regulates protein structure and intracellular localization. SAE1 and UBA2 form a heterodimer that functions as a SUMO-activating enzyme for the sumoylation of proteins.

Target Details

Molecular Weight: 38 kDa (MW of target protein)

Application Details

Application Notes: WB: 1 µg/mL
Optimal conditions should be determined by the investigator.

Comment: SAE1 Blocking Peptide, catalog no. 33R-6581, is also available for use as a blocking control in assays to test for specificity of this SAE1 antibody

Restrictions: For Research Use only

Handling

Format: Lyophilized

Reconstitution: Lyophilized powder. Add distilled water for a 1 mg/mL concentration of SAE1 antibody in PBS

Concentration: Lot specific

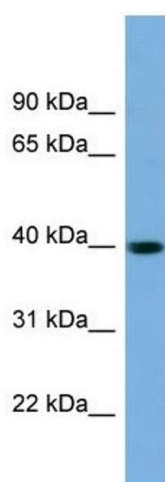
Buffer: PBS

Handling Advice: Avoid repeated freeze/thaw cycles.
Dilute only prior to immediate use.

Storage: 4 °C/-20 °C

Storage Comment: Store at 2-8 °C for short periods. For longer periods of storage, store at -20 °C.

Images



Western Blotting

Image 1. SAE1 antibody used at 1 ug/ml to detect target protein.