

Datasheet for ABIN631750 **anti-MASA antibody (N-Term)**



[Go to Product page](#)

1 Image

Overview

| | |
|----------------------|-------------------------------------|
| Quantity: | 100 µL |
| Target: | MASA (ENOPH1) |
| Binding Specificity: | N-Term |
| Reactivity: | Human |
| Host: | Rabbit |
| Clonality: | Polyclonal |
| Conjugate: | This MASA antibody is un-conjugated |
| Application: | Western Blotting (WB) |

Product Details

| | |
|---------------|---|
| Immunogen: | ENOPH1 antibody was raised using the N terminal of ENOPH1 corresponding to a region with amino acids IEENVKEYLQTHWEEEECCQDVSLLRKQAEEDAHLDGAVPIPAASGNQVD |
| Specificity: | ENOPH1 antibody was raised against the N terminal of ENOPH1 |
| Purification: | Affinity purified |

Target Details

| | |
|-------------------|---|
| Target: | MASA (ENOPH1) |
| Alternative Name: | ENOPH1 (ENOPH1 Products) |
| Background: | ENOPH1 is a bifunctional enzyme that catalyzes the enolization of 2,3-diketo-5-methylthiopentyl-1-phosphate (DK-MTP-1-P) into the intermediate 2-hydroxy-3-keto-5-methylthiopentenyl-1-phosphate (HK-MTPenyl-1-P), which is then dephosphorylated to form the |

Target Details

acireductone 1,2-dihydroxy-3-keto-5-methylthiopentene (DHK-MTPene).

Molecular Weight: 29 kDa (MW of target protein)

Pathways: [Methionine Biosynthetic Process](#)

Application Details

Application Notes: WB: 1 µg/mL
Optimal conditions should be determined by the investigator.

Comment: ENOPH1 Blocking Peptide, catalog no. 33R-3937, is also available for use as a blocking control in assays to test for specificity of this ENOPH1 antibody

Restrictions: For Research Use only

Handling

Format: Lyophilized

Reconstitution: Lyophilized powder. Add distilled water for a 1 mg/mL concentration of ENOPH1 antibody in PBS

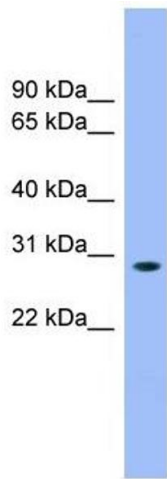
Concentration: Lot specific

Buffer: PBS

Handling Advice: Avoid repeated freeze/thaw cycles.
Dilute only prior to immediate use.

Storage: 4 °C/-20 °C

Storage Comment: Store at 2-8 °C for short periods. For longer periods of storage, store at -20 °C.



Western Blotting

Image 1. ENOPH1 antibody used at 1 ug/ml to detect target protein.