

Datasheet for ABIN631784
anti-CRBN antibody (N-Term)



[Go to Product page](#)

1 Image

Overview

Quantity:	100 µL
Target:	CRBN
Binding Specificity:	N-Term
Reactivity:	Human
Host:	Rabbit
Clonality:	Polyclonal
Conjugate:	This CRBN antibody is un-conjugated
Application:	Western Blotting (WB)

Product Details

Immunogen:	CRBN antibody was raised using the N terminal of CRBN corresponding to a region with amino acids DQDSKEAKKPNIIINFDTSLPTSHTYLGADMEEFHGRTLHDDDDSCQVIPVL
Specificity:	CRBN antibody was raised against the N terminal of CRBN
Purification:	Affinity purified

Target Details

Target:	CRBN
Alternative Name:	CRBN (CRBN Products)
Background:	This gene encodes a protein related to the Lon protease protein family. In rodents and other mammals this gene product is found in the cytoplasm localized with a calcium channel membrane protein, and is thought to play a role in brain development.

Target Details

Molecular Weight: 50 kDa (MW of target protein)

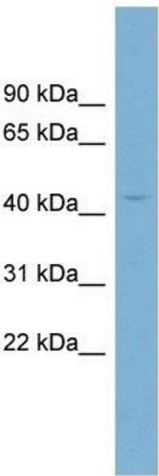
Application Details

Application Notes:	WB: 1 µg/mL Optimal conditions should be determined by the investigator.
Comment:	CRBN Blocking Peptide, catalog no. 33R-2125, is also available for use as a blocking control in assays to test for specificity of this CRBN antibody
Restrictions:	For Research Use only

Handling

Format:	Lyophilized
Reconstitution:	Lyophilized powder. Add distilled water for a 1 mg/mL concentration of CRBN antibody in PBS
Concentration:	Lot specific
Buffer:	PBS
Handling Advice:	Avoid repeated freeze/thaw cycles. Dilute only prior to immediate use.
Storage:	4 °C/-20 °C
Storage Comment:	Store at 2-8 °C for short periods. For longer periods of storage, store at -20 °C.

Images



Western Blotting

Image 1. CRBN antibody used at 1 ug/ml to detect target protein.