

Datasheet for ABIN631791
anti-EPS15 antibody (C-Term)



[Go to Product page](#)

1 Image

Overview

Quantity:	100 µL
Target:	EPS15
Binding Specificity:	C-Term
Reactivity:	Human, Mouse
Host:	Rabbit
Clonality:	Polyclonal
Conjugate:	This EPS15 antibody is un-conjugated
Application:	Western Blotting (WB)

Product Details

Immunogen:	EPS15 antibody was raised using the C terminal of EPS15 corresponding to a region with amino acids LDSPDPFKLNDPFQFPFGNDSPKEKDPEIFCDPFTSATTTTNKEADPSNF
Specificity:	EPS15 antibody was raised against the C terminal of EPS15
Purification:	Affinity purified

Target Details

Target:	EPS15
Alternative Name:	EPS15 (EPS15 Products)
Background:	EPS15 is a protein that is part of the EGFR pathway. The protein is present at clathrin-coated pits and is involved in receptor-mediated endocytosis of EGF. Notably, this gene is rearranged with the HRX/ALL/MLL gene in acute myelogenous leukemias.

Target Details

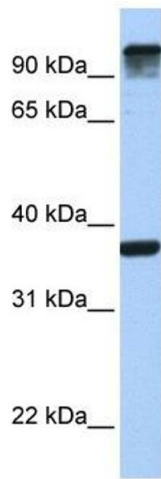
Molecular Weight:	99 kDa (MW of target protein)
Pathways:	EGFR Signaling Pathway , Regulation of Muscle Cell Differentiation , Skeletal Muscle Fiber Development , EGFR Downregulation

Application Details

Application Notes:	WB: 1 µg/mL Optimal conditions should be determined by the investigator.
Comment:	EPS15 Blocking Peptide, catalog no. 33R-4868, is also available for use as a blocking control in assays to test for specificity of this EPS15 antibody
Restrictions:	For Research Use only

Handling

Format:	Lyophilized
Reconstitution:	Lyophilized powder. Add distilled water for a 1 mg/mL concentration of EPS15 antibody in PBS
Concentration:	Lot specific
Buffer:	PBS
Handling Advice:	Avoid repeated freeze/thaw cycles. Dilute only prior to immediate use.
Storage:	4 °C/-20 °C
Storage Comment:	Store at 2-8 °C for short periods. For longer periods of storage, store at -20 °C.



Western Blotting

Image 1. EPS15 antibody used at 1 ug/ml to detect target protein.