

Datasheet for ABIN631797  
**anti-C7orf43 antibody (Middle Region)**



[Go to Product page](#)

1 Image

## Overview

Quantity:	100 µL
Target:	C7orf43
Binding Specificity:	Middle Region
Reactivity:	Human
Host:	Rabbit
Clonality:	Polyclonal
Conjugate:	This C7orf43 antibody is un-conjugated
Application:	Western Blotting (WB)

## Product Details

Immunogen:	C7 ORF43 antibody was raised using the middle region of C7 rf43 corresponding to a region with amino acids DLVERHQASLGRSQSFHQPSRSHLMRSGVMERRAITPPVASPVGRPL
Specificity:	C7 ORF43 antibody was raised against the middle region of C7 rf43
Purification:	Affinity purified

## Target Details

Target:	C7orf43
Alternative Name:	C7ORF43 ( <a href="#">C7orf43 Products</a> )
Background:	The function of Chromosome 7 ORF protein is not widely studied, and is yet to be elucidated fully.

## Target Details

---

Molecular Weight: 62 kDa (MW of target protein)

## Application Details

---

Application Notes: WB: 1 µg/mL  
Optimal conditions should be determined by the investigator.

Comment: C7ORF43 Blocking Peptide, catalog no. 33R-2071, is also available for use as a blocking control in assays to test for specificity of this C7ORF43 antibody

Restrictions: For Research Use only

## Handling

---

Format: Lyophilized

Reconstitution: Lyophilized powder. Add distilled water for a 1 mg/mL concentration of C0 RF43 antibody in PBS

Concentration: Lot specific

Buffer: PBS

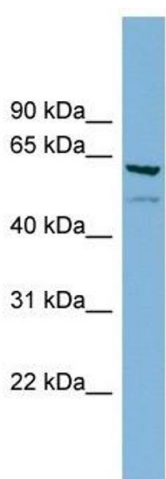
Handling Advice: Avoid repeated freeze/thaw cycles.  
Dilute only prior to immediate use.

Storage: 4 °C/-20 °C

Storage Comment: Store at 2-8 °C for short periods. For longer periods of storage, store at -20 °C.

## Images

---



### Western Blotting

**Image 1.** C7ORF43 antibody used at 1 µg/ml to detect target protein.