

Datasheet for ABIN631799 **anti-CYP26B1 antibody (N-Term)**



[Go to Product page](#)

1 Image

Overview

Quantity:	100 µL
Target:	CYP26B1
Binding Specificity:	N-Term
Reactivity:	Human
Host:	Rabbit
Clonality:	Polyclonal
Conjugate:	This CYP26B1 antibody is un-conjugated
Application:	Western Blotting (WB)

Product Details

Immunogen:	CYP26 B1 antibody was raised using the N terminal of CYP26 1 corresponding to a region with amino acids LRWAATRDKSKLPIPKGSMGFPLIGETGHWLLQSGFQSSRREKYGNVF
Specificity:	CYP26 B1 antibody was raised against the N terminal of CYP26 1
Purification:	Affinity purified

Target Details

Target:	CYP26B1
Alternative Name:	CYP26B1 (CYP26B1 Products)
Background:	This gene encodes a member of the cytochrome P450 superfamily of enzymes. The cytochrome P450 proteins are monooxygenases that catalyze many reactions involved in drug metabolism and the synthesis of cholesterol, steroids and other lipids. The enzyme encoded by

Target Details

this gene is involved in the specific inactivation of all-trans-retinoic acid to hydroxylated forms.

Molecular Weight: 57 kDa (MW of target protein)

Pathways: [Retinoic Acid Receptor Signaling Pathway](#), [Regulation of Muscle Cell Differentiation](#),
[Monocarboxylic Acid Catabolic Process](#)

Application Details

Application Notes: WB: 1 µg/mL
Optimal conditions should be determined by the investigator.

Comment: CYP26B1 Blocking Peptide, catalog no. 33R-5404, is also available for use as a blocking control in assays to test for specificity of this CYP26B1 antibody

Restrictions: For Research Use only

Handling

Format: Lyophilized

Reconstitution: Lyophilized powder. Add distilled water for a 1 mg/mL concentration of CYP20 1 antibody in PBS

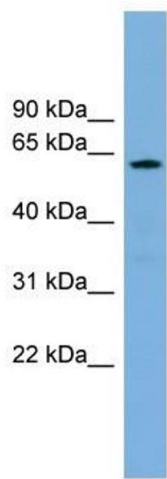
Concentration: Lot specific

Buffer: PBS

Handling Advice: Avoid repeated freeze/thaw cycles.
Dilute only prior to immediate use.

Storage: 4 °C/-20 °C

Storage Comment: Store at 2-8 °C for short periods. For longer periods of storage, store at -20 °C.



Western Blotting

Image 1. CYP26B1 antibody used at 1 ug/ml to detect target protein.