

## Datasheet for ABIN631801 **anti-DNALI1 antibody (C-Term)**



[Go to Product page](#)

### 1 Image

#### Overview

Quantity:	100 µL
Target:	DNALI1
Binding Specificity:	C-Term
Reactivity:	Human, Mouse, Rat
Host:	Rabbit
Clonality:	Polyclonal
Conjugate:	This DNALI1 antibody is un-conjugated
Application:	Western Blotting (WB)

#### Product Details

Immunogen:	DNALI1 antibody was raised using the C terminal of DNALI1 corresponding to a region with amino acids ALQAEQGKSDMERKIAELETEKRDLERQVNEQKAKCEATEKRESERRQVE
Specificity:	DNALI1 antibody was raised against the C terminal of DNALI1
Purification:	Affinity purified

#### Target Details

Target:	DNALI1
Alternative Name:	DNALI1 ( <a href="#">DNALI1 Products</a> )
Background:	DNALI1 is the human homolog of the Chlamydomonas inner dynein arm gene, p28. The precise function of this gene is not known, however, it is a potential candidate for immotile cilia syndrome (ICS). Ultrastructural defects of the inner dynein arms are seen in patients with ICS.

## Target Details

Immotile mutant strains of Chlamydomonas, a biflagellated algae, exhibit similar defects.

Molecular Weight: 31 kDa (MW of target protein)

## Application Details

Application Notes: WB: 1 µg/mL

Optimal conditions should be determined by the investigator.

Comment: DNALI1 Blocking Peptide, catalog no. 33R-1361, is also available for use as a blocking control in assays to test for specificity of this DNALI1 antibody

Restrictions: For Research Use only

## Handling

Format: Lyophilized

Reconstitution: Lyophilized powder. Add distilled water for a 1 mg/mL concentration of DNALI1 antibody in PBS

Concentration: Lot specific

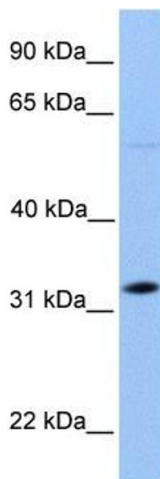
Buffer: PBS

Handling Advice: Avoid repeated freeze/thaw cycles.  
Dilute only prior to immediate use.

Storage: 4 °C/-20 °C

Storage Comment: Store at 2-8 °C for short periods. For longer periods of storage, store at -20 °C.

## Images



### Western Blotting

**Image 1.** DNALI1 antibody used at 1 µg/ml to detect target protein.